



F

# Serie **Function**

**RACCORDI A FUNZIONE**  
*FUNCTION FITTINGS*

# Regolatori di Portata Serie 50000 - 55000 - 57000

## Flow Regulators Valves 50000 - 55000 - 5700

### Caratteristiche Tecniche / Technical Characteristics



#### Pressioni / Pressures

Pressione minima / Minimum pressure: **1 bar (0.1 MPa)**  
 Pressione massima / Maximum pressure: **10 bar (1 MPa)**

#### Temperature / Temperatures

Temperatura minima / Minimum temperature: **-20 °C**  
 Temperatura massima / Maximum temperature: **+80 °C**

#### Filettature / Threads

Filettatura (SHORT).  
 (SHORT) Threads.

#### Tubi di collegamento / Connection Tubes

Tubi in materiale plastico:  
 PA6, PA11, PA12, Polietilene, \*Poliuretano, FEP, PTFE.  
 \*Per tubi in Poliuretano é consigliata una durezza di 98 shore.  
 Plastic tubes:  
 PA6, PA11, PA12, Polyethylene, \*Polyurethane, FEP, PTFE.  
 \*For Polyurethane hoses it is required a minimum hardness of 98 shore.

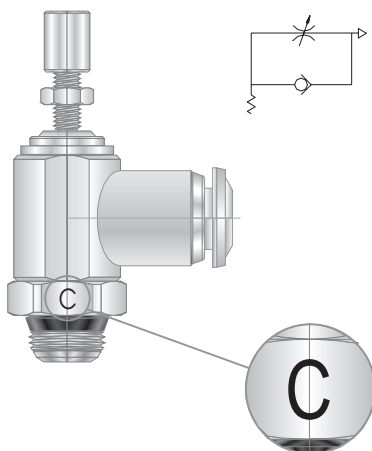
#### Fluidi compatibili / Fluids

Aria compressa / Compressed air.

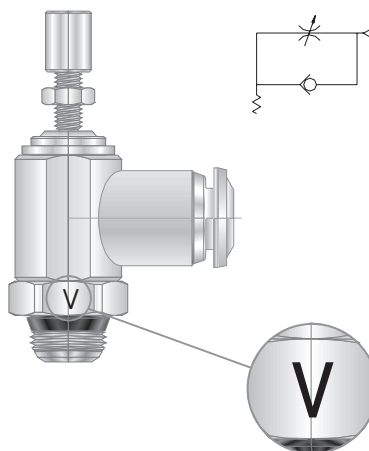
**UNIDIREZIONALE PER  
 CILINDRO**  
 UNI-DIRECTIONAL  
 FOR CYLINDER

**UNIDIREZIONALE PER  
 VAVOLA**  
 UNI-DIRECTIONAL  
 FOR VALVE

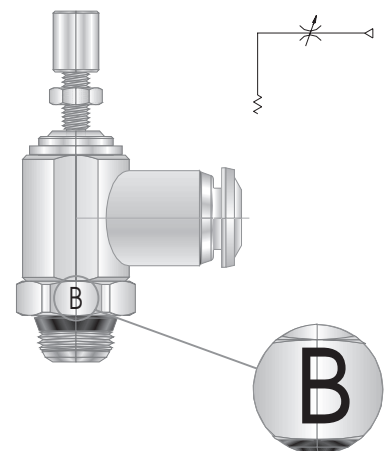
**BIDIREZIONALE**  
 BI-DIRECTIONAL



Codice / Code  
 50901 - 55901 - 57901  
 50905 - 55905 - 57905



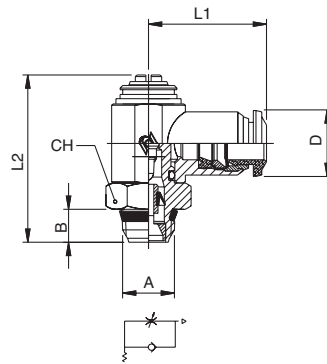
Codice / Code  
 50910 - 55910 - 57910  
 50915 - 55915 - 57915



Codice / Code  
 50920 - 55920 - 57920  
 50925 - 55925 - 57925

# 50901

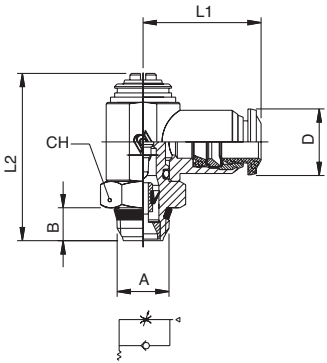
## REGOLATORE UNIDIREZIONALE ORIENTABILE PER CILINDRO SHORT REGOLAZIONE A CACCIAVITE ORIENTING FLOW REGULATOR FOR CYLINDER (SHORT) SCREWDRIVER REGULATION



Codice Code	Tubo Tube	A	B	L1	L2	CH	D	Conf. Pack.
5090100001	3	M5	4	19	29.5	8	10	10
5090100002	4	M5	4	19	29.5	8	10	10
5090100003	4	1/8	5.5	21	31	14	10	10
5090100004	5	M5	4	20	29.5	8	12.5	10
5090100005	5	1/8	5.5	21.5	31	14	12.5	10
5090100006	5	1/4	7	24.5	36.5	17	12.5	10
5090100007	6	M5	4	20.5	29.5	8	12.5	10
5090100008	6	1/8	5.5	22.5	31	14	12.5	10
5090100009	6	1/4	7	25	36.5	17	12.5	10
5090100010	8	1/8	5.5	24	31	14	14	10
5090100011	8	1/4	7	26	36.5	17	14	10
5090100016	8	3/8	7.5	28.5	42.5	20	14	10
5090100017	10	1/4	7	28.5	36.5	17	17	10
5090100012	10	3/8	7.5	30.5	42.5	20	17	10
5090100013	12	3/8	7.5	32.5	42.5	20	21.5	10
5090100014	12	1/2	9	35	47	24	21.5	10
5090100015	14	1/2	9	35.5	47	24	21.5	10

# 50910

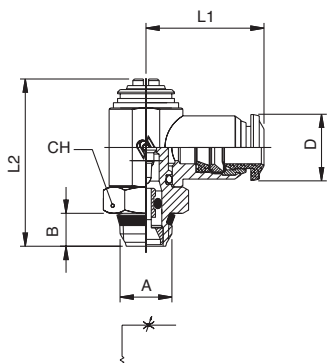
## REGOLATORE UNIDIREZIONALE ORIENTABILE PER VALVOLA SHORT REGOLAZIONE A CACCIAVITE ORIENTING FLOW REGULATOR FOR VALVE (SHORT) SCREWDRIVER REGULATION



Codice Code	Tubo Tube	A	B	L1	L2	CH	D	Conf. Pack.
5091000001	3	M5	4	19	29.5	8	10	10
5091000002	4	M5	4	19	29.5	8	10	10
5091000003	4	1/8	5.5	21	31	14	10	10
5091000004	5	M5	4	20	29.5	8	12.5	10
5091000005	5	1/8	5.5	21.5	31	14	12.5	10
5091000006	5	1/4	7	24.5	36.5	17	12.5	10
5091000007	6	M5	4	20.5	29.5	8	12.5	10
5091000008	6	1/8	5.5	22.5	31	14	12.5	10
5091000009	6	1/4	7	25	36.5	17	12.5	10
5091000010	8	1/8	5.5	24	31	14	14	10
5091000011	8	1/4	7	26	36.5	17	14	10
5091000016	8	3/8	7.5	28.5	42.5	20	14	10
5091000017	10	1/4	7	28.5	36.5	17	17	10
5091000012	10	3/8	7.5	30.5	42.5	20	17	10
5091000013	12	3/8	7.5	32.5	42.5	20	21.5	10
5091000014	12	1/2	9	35	47	24	21.5	10
5091000015	14	1/2	9	35.5	47	24	21.5	10

# 50920

## REGOLATORE BIDIREZIONALE ORIENTABILE SHORT REGOLAZIONE A CACCIAVITE ORIENTING BI-DIRECTIONAL FLOW REGULATOR (SHORT) SCREWDRIVER REGULATION

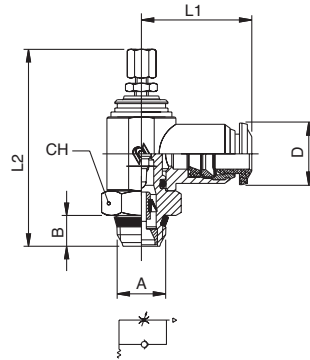


Codice Code	Tubo Tube	A	B	L1	L2	CH	D	Conf. Pack.
5092000001	3	M5	4	19	29.5	8	10	10
5092000002	4	M5	4	19	29.5	8	10	10
5092000003	4	1/8	5.5	21	31	14	10	10
5092000004	5	M5	4	20	29.5	8	12.5	10
5092000005	5	1/8	5.5	21.5	31	14	12.5	10
5092000006	5	1/4	7	24.5	36.5	17	12.5	10
5092000007	6	M5	4	20.5	29.5	8	12.5	10
5092000008	6	1/8	5.5	22.5	31	14	12.5	10
5092000009	6	1/4	7	25	36.5	17	12.5	10
5092000010	8	1/8	5.5	24	31	14	14	10
5092000011	8	1/4	7	26	36.5	17	14	10
5092000016	8	3/8	7.5	28.5	42.5	20	14	10
5092000017	10	1/4	7	28.5	36.5	17	17	10
5092000012	10	3/8	7.5	30.5	42.5	20	17	10
5092000013	12	3/8	7.5	32.5	42.5	20	21.5	10
5092000014	12	1/2	9	35	47	24	21.5	10
5092000015	14	1/2	9	35.5	47	24	21.5	10



# 50905

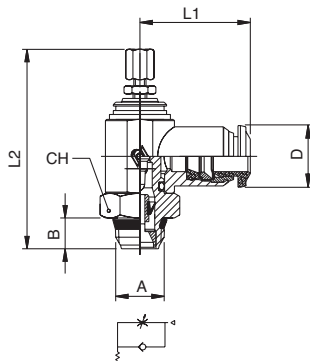
**REGOLATORE UNIDIREZIONALE ORIENTABILE PER CILINDRO SHORT REGOLAZIONE MANUALE**  
*ORIENTING FLOW REGULATOR FOR CYLINDER (SHORT) MANUAL REGULATION*



Codice Code	Tubo Tube	A	B	L1	L2min	L2max	CH	D	Conf. Pack.
509050001	3	M5	4	19	38.5	42.5	8	10	10
509050002	4	M5	4	19	38.5	42.5	8	10	10
509050003	4	1/8	5.5	21	44	49	14	10	10
509050004	5	M5	4	20	38.5	42.5	8	12.5	10
509050005	5	1/8	5.5	21.5	44	49	14	12.5	10
509050006	5	1/4	7	24.5	48.5	55	17	12.5	10
509050007	6	M5	4	20.5	38.5	42.5	8	12.5	10
509050008	6	1/8	5.5	22.5	44	49	14	12.5	10
509050009	6	1/4	7	25	48.5	55	17	12.5	10
509050010	8	1/8	5.5	24	44	49	14	14	10
509050011	8	1/4	7	26	48.5	55	17	14	10
509050016	8	3/8	7.5	28.5	56	65	20	14	10
509050017	10	1/4	7	28.5	48.5	55	17	17	10
509050012	10	3/8	7.5	30.5	56	65	20	17	10
509050013	12	3/8	7.5	32.5	56	65	20	21.5	10
509050014	12	1/2	9	35	62	69	24	21.5	10
509050015	14	1/2	9	35.5	62	69	24	21.5	10

# 50915

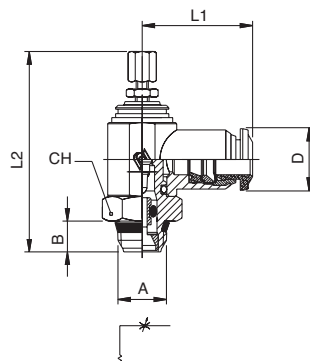
**REGOLATORE UNIDIREZIONALE ORIENTABILE PER VALVOLA SHORT REGOLAZIONE MANUALE**  
*ORIENTING FLOW REGULATOR FOR VALVE (SHORT) MANUAL REGULATION*



Codice Code	Tubo Tube	A	B	L1	L2min	L2max	CH	D	Conf. Pack.
509150001	3	M5	4	19	38.5	42.5	8	10	10
509150002	4	M5	4	19	38.5	42.5	8	10	10
509150003	4	1/8	5.5	21	44	49	14	10	10
509150004	5	M5	4	20	38.5	42.5	8	12.5	10
509150005	5	1/8	5.5	21.5	44	49	14	12.5	10
509150006	5	1/4	7	24.5	48.5	55	17	12.5	10
509150007	6	M5	4	20.5	38.5	42.5	8	12.5	10
509150008	6	1/8	5.5	22.5	44	49	14	12.5	10
509150009	6	1/4	7	25	48.5	55	17	12.5	10
509150010	8	1/8	5.5	24	44	49	14	14	10
509150011	8	1/4	7	26	48.5	55	17	14	10
509150016	8	3/8	7.5	28.5	56	65	20	14	10
509150017	10	1/4	7	28.5	48.5	55	17	17	10
509150012	10	3/8	7.5	30.5	56	65	20	17	10
509150013	12	3/8	7.5	32.5	56	65	20	21.5	10
509150014	12	1/2	9	35	62	69	24	21.5	10
509150015	14	1/2	9	35.5	62	69	24	21.5	10

# 50925

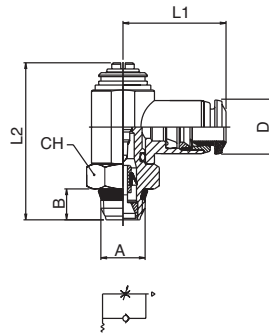
**REGOLATORE BIDIREZIONALE ORIENTABILE SHORT REGOLAZIONE MANUALE**  
*ORIENTING BI-DIRECTIONAL FLOW REGULATOR (SHORT) MANUAL REGULATION*



Codice Code	Tubo Tube	A	B	L1	L2min	L2max	CH	D	Conf. Pack.
509250001	3	M5	4	19	38.5	42.5	8	10	10
509250002	4	M5	4	19	38.5	42.5	8	10	10
509250003	4	1/8	5.5	21	44	49	14	10	10
509250004	5	M5	4	20	38.5	42.5	8	12.5	10
509250005	5	1/8	5.5	21.5	44	49	14	12.5	10
509250006	5	1/4	7	24.5	48.5	55	17	12.5	10
509250007	6	M5	4	20.5	38.5	42.5	8	12.5	10
509250008	6	1/8	5.5	22.5	44	49	14	12.5	10
509250009	6	1/4	7	25	48.5	55	17	12.5	10
509250010	8	1/8	5.5	24	44	49	14	14	10
509250011	8	1/4	7	26	48.5	55	17	14	10
509250016	8	3/8	7.5	28.5	56	65	20	14	10
509250017	10	1/4	7	28.5	48.5	55	17	17	10
509250012	10	3/8	7.5	30.5	56	65	20	17	10
509250013	12	3/8	7.5	32.5	56	65	20	21.5	10
509250014	12	1/2	9	35	62	69	24	21.5	10
509250015	14	1/2	9	35.5	62	69	24	21.5	10

# 55900

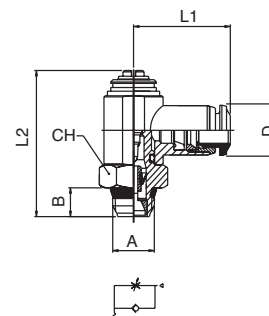
## REGOLATORE UNIDIREZIONALE ORIENTABILE PER CILINDRO SHORT REGOLAZIONE A CACCIAVITE ORIENTING FLOW REGULATOR FOR CYLINDER (SHORT) SCREWDRIVER REGULATION



Codice Code	Tubo Tube	A	B	L1	L2	CH	D	Conf. Pack.
559000002	4	M5	5.5	19.5	29.5	8	10	10
559000003	4	1/8	5.5	21.5	31	14	10	10
559000004	5	M5	5.5	20.5	29.5	8	12.5	10
559000005	5	1/8	5.5	22.5	31	14	12.5	10
559000006	5	1/4	7	25	36.5	17	12.5	10
559000007	6	M5	5.5	21	29.5	8	12.5	10
559000008	6	1/8	5.5	23	31	14	12.5	10
559000009	6	1/4	7	25.5	36.5	17	12.5	10
559000010	8	1/8	5.5	23.5	31	14	14	10
559000011	8	1/4	7	26	36.5	17	14	10
559000012	8	3/8	8.5	27.5	42.5	20	14	10
559000013	10	3/8	8.5	30.5	42.5	20	17	10
559000014	12	3/8	8.5	32.5	42.5	20	21.5	10
559000015	12	1/2	10	35	47	24	21.5	10

# 55910

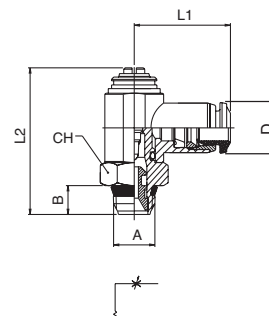
## REGOLATORE UNIDIREZIONALE ORIENTABILE PER VALVOLA SHORT REGOLAZIONE A CACCIAVITE ORIENTING FLOW REGULATOR FOR VALVE (SHORT) SCREWDRIVER REGULATION



Codice Code	Tubo Tube	A	B	L1	L2	CH	D	Conf. Pack.
559100002	4	M5	5.5	19.5	29.5	8	10	10
559100003	4	1/8	5.5	21.5	31	14	10	10
559100004	5	M5	5.5	20.5	29.5	8	12.5	10
559100005	5	1/8	5.5	22.5	31	14	12.5	10
559100006	5	1/4	7	25	36.5	17	12.5	10
559100007	6	M5	5.5	21	29.5	8	12.5	10
559100008	6	1/8	5.5	23	31	14	12.5	10
559100009	6	1/4	7	25.5	36.5	17	12.5	10
559100010	8	1/8	5.5	23.5	31	14	14	10
559100011	8	1/4	7	26	36.5	17	14	10
559100012	8	3/8	8.5	27.5	42.5	20	14	10
559100013	10	3/8	8.5	30.5	42.5	20	17	10
559100014	12	3/8	8.5	32.5	42.5	20	21.5	10
559100015	12	1/2	10	35	47	24	21.5	10

# 55920

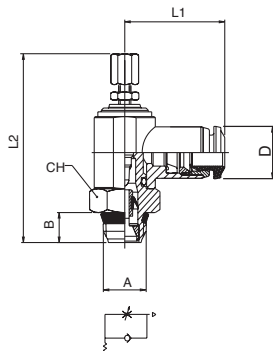
## REGOLATORE BIDIREZIONALE ORIENTABILE SHORT REGOLAZIONE A CACCIAVITE ORIENTING BI-DIRECTIONAL FLOW REGULATOR (SHORT) SCREWDRIVER REGULATION



Codice Code	Tubo Tube	A	B	L1	L2	CH	D	Conf. Pack.
559200002	4	M5	5.5	19.5	29.5	8	10	10
559200003	4	1/8	5.5	21.5	31	14	10	10
559200004	5	M5	5.5	20.5	29.5	8	12.5	10
559200005	5	1/8	5.5	22.5	31	14	12.5	10
559200006	5	1/4	7	25	36.5	17	12.5	10
559200007	6	M5	5.5	21	29.5	8	12.5	10
559200008	6	1/8	5.5	23	31	14	12.5	10
559200009	6	1/4	7	25.5	36.5	17	12.5	10
559200010	8	1/8	5.5	23.5	31	14	14	10
559200011	8	1/4	7	26	36.5	17	14	10
559200012	8	3/8	8.5	27.5	42.5	20	14	10
559200013	10	3/8	8.5	30.5	42.5	20	17	10
559200014	12	3/8	8.5	32.5	42.5	20	21.5	10
559200015	12	1/2	10	35	47	24	21.5	10

# 55905

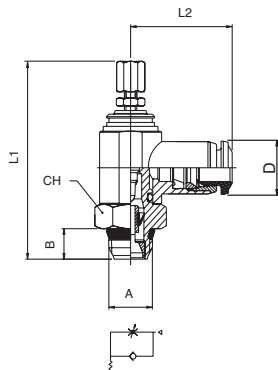
**REGOLATORE UNIDIREZIONALE ORIENTABILE PER CILINDRO SHORT REGOLAZIONE MANUALE**  
*ORIENTING FLOW REGULATOR FOR CYLINDER (SHORT) MANUAL REGULATION*



Codice Code	Tubo Tube	A	B	L1	L2min	L2max	CH	D	Conf. Pack.
559050002	4	M5	5.5	19.5	38.5	42.5	8	10	10
559050003	4	1/8	5.5	21.5	44	49	14	10	10
559050004	5	M5	5.5	20.5	38.5	42.5	8	12.5	10
559050005	5	1/8	5.5	22.5	44	49	14	12.5	10
559050006	5	1/4	7	25	48.5	55	17	12.5	10
559050007	6	M5	5.5	21	38.5	42.5	8	12.5	10
559050008	6	1/8	5.5	23	44	49	14	12.5	10
559050009	6	1/4	7	25.5	48.5	55	17	12.5	10
559050010	8	1/8	5.5	23.5	44	49	14	14	10
559050011	8	1/4	7	26	48.5	55	17	14	10
559050012	8	3/8	8.5	27.5	56	65	20	14	10
559050013	10	3/8	8.5	30.5	56	65	20	17	10
559050014	12	3/8	8.5	32.5	56	65	20	21.5	10
559050015	12	1/2	10	35	62	69	24	21.5	10

# 55915

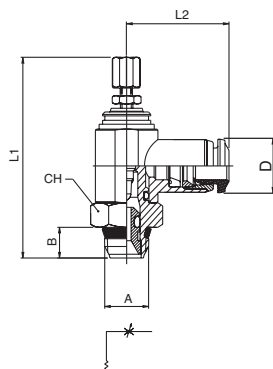
**REGOLATORE UNIDIREZIONALE ORIENTABILE PER VALVOLA SHORT REGOLAZIONE MANUALE**  
*ORIENTING FLOW REGULATOR FOR VALVE (SHORT) MANUAL REGULATION*



Codice Code	Tubo Tube	A	B	L1	L2min	L2max	CH	D	Conf. Pack.
559150002	4	M5	5.5	19.5	38.5	42.5	8	10	10
559150003	4	1/8	5.5	21.5	44	49	14	10	10
559150004	5	M5	5.5	20.5	38.5	42.5	8	12.5	10
559150005	5	1/8	5.5	22.5	44	49	14	12.5	10
559150006	5	1/4	7	25	48.5	55	17	12.5	10
559150007	6	M5	5.5	21	38.5	42.5	8	12.5	10
559150008	6	1/8	5.5	23	44	49	14	12.5	10
559150009	6	1/4	7	25.5	48.5	55	17	12.5	10
559150010	8	1/8	5.5	23.5	44	49	14	14	10
559150011	8	1/4	7	26	48.5	55	17	14	10
559150012	8	3/8	8.5	27.5	56	65	20	14	10
559150013	10	3/8	8.5	30.5	56	65	20	17	10
559150014	12	3/8	8.5	32.5	56	65	20	21.5	10
559150015	12	1/2	10	35	62	69	24	21.5	10

# 55925

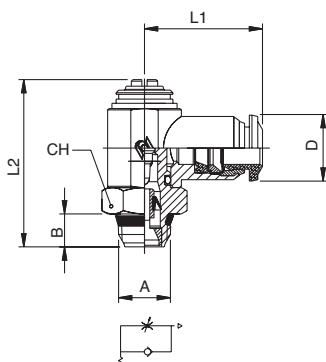
**REGOLATORE BIDIREZIONALE ORIENTABILE SHORT REGOLAZIONE MANUALE**  
*ORIENTING BI-DIRECTIONAL FLOW REGULATOR (SHORT) MANUAL REGULATION*



Codice Code	Tubo Tube	A	B	L1	L2min	L2max	CH	D	Conf. Pack.
559250002	4	M5	5.5	19.5	38.5	42.5	8	10	10
559250003	4	1/8	5.5	21.5	44	49	14	10	10
559250004	5	M5	5.5	20.5	38.5	42.5	8	12.5	10
559250005	5	1/8	5.5	22.5	44	49	14	12.5	10
559250006	5	1/4	7	25	48.5	55	17	12.5	10
559250007	6	M5	5.5	21	38.5	42.5	8	12.5	10
559250008	6	1/8	5.5	23	44	49	14	12.5	10
559250009	6	1/4	7	25.5	48.5	55	17	12.5	10
559250010	8	1/8	5.5	23.5	44	49	14	14	10
559250011	8	1/4	7	26	48.5	55	17	14	10
559250012	8	3/8	8.5	27.5	56	65	20	14	10
559250013	10	3/8	8.5	30.5	56	65	20	17	10
559250014	12	3/8	8.5	32.5	56	65	20	21.5	10
559250015	12	1/2	10	35	62	69	24	21.5	10

# 57901

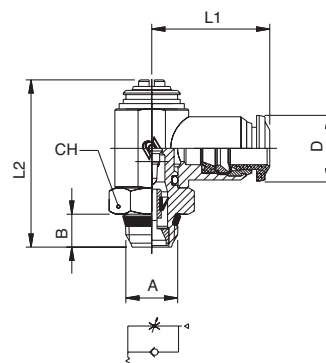
## REGOLATORE UNIDIREZIONALE ORIENTABILE PER CILINDRO SHORT REGOLAZIONE A CACCIAVITE ORIENTING FLOW REGULATOR FOR CYLINDER (SHORT) SCREWDRIVER REGULATION



Codice Code	Tubo Tube	A	B	L1	L2	CH	D	Conf. Pack.
579010002	4	M5	4	19	29.5	8	10	10
579010003	4	1/8	5.5	21	31	14	10	10
579010004	5	M5	4	20	29.5	8	12.5	10
579010005	5	1/8	5.5	21.5	31	14	12.5	10
579010006	5	1/4	7	24.5	36.5	17	12.5	10
579010007	6	M5	4	20.5	29.5	8	12.5	10
579010008	6	1/8	5.5	22.5	31	14	12.5	10
579010009	6	1/4	7	25	36.5	17	12.5	10
579010010	8	1/8	5.5	24	31	14	14	10
579010011	8	1/4	7	26	36.5	17	14	10
579010016	8	3/8	7.5	28.5	42.5	20	14	10
579010017	10	1/4	7	28.5	36.5	17	17	10
579010012	10	3/8	7.5	30.5	42.5	20	17	10
579010013	12	3/8	7.5	32.5	42.5	20	21.5	10
579010014	12	1/2	9	35	47	24	21.5	10
579010015	14	1/2	9	35.5	47	24	21.5	10

# 57910

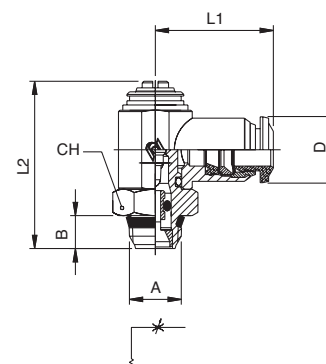
## REGOLATORE UNIDIREZIONALE ORIENTABILE PER VALVOLA SHORT REGOLAZIONE A CACCIAVITE ORIENTING FLOW REGULATOR FOR VALVE (SHORT) SCREWDRIVER REGULATION



Codice Code	Tubo Tube	A	B	L1	L2	CH	D	Conf. Pack.
579100002	4	M5	4	19	29.5	8	10	10
579100003	4	1/8	5.5	21	31	14	10	10
579100004	5	M5	4	20	29.5	8	12.5	10
579100005	5	1/8	5.5	21.5	31	14	12.5	10
579100006	5	1/4	7	24.5	36.5	17	12.5	10
579100007	6	M5	4	20.5	29.5	8	12.5	10
579100008	6	1/8	5.5	22.5	31	14	12.5	10
579100009	6	1/4	7	25	36.5	17	12.5	10
579100010	8	1/8	5.5	24	31	14	14	10
579100011	8	1/4	7	26	36.5	17	14	10
579100016	8	3/8	7.5	28.5	42.5	20	14	10
579100017	10	1/4	7	28.5	36.5	17	17	10
579100012	10	3/8	7.5	30.5	42.5	20	17	10
579100013	12	3/8	7.5	32.5	42.5	20	21.5	10
579100014	12	1/2	9	35	47	24	21.5	10
579100015	14	1/2	9	35.5	47	24	21.5	10

# 57920

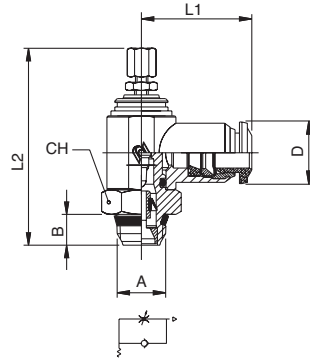
## REGOLATORE BIDIREZIONALE ORIENTABILE SHORT REGOLAZIONE A CACCIAVITE ORIENTING BI-DIRECTIONAL FLOW REGULATOR (SHORT) SCREWDRIVER REGULATION



Codice Code	Tubo Tube	A	B	L1	L2	CH	D	Conf. Pack.
579200002	4	M5	4	19	29.5	8	10	10
579200003	4	1/8	5.5	21	31	14	10	10
579200004	5	M5	4	20	29.5	8	12.5	10
579200005	5	1/8	5.5	21.5	31	14	12.5	10
579200006	5	1/4	7	24.5	36.5	17	12.5	10
579200007	6	M5	4	20.5	29.5	8	12.5	10
579200008	6	1/8	5.5	22.5	31	14	12.5	10
579200009	6	1/4	7	25	36.5	17	12.5	10
579200010	8	1/8	5.5	24	31	14	14	10
579200011	8	1/4	7	26	36.5	17	14	10
579200016	8	3/8	7.5	28.5	42.5	20	14	10
579200017	10	1/4	7	28.5	36.5	17	17	10
579200012	10	3/8	7.5	30.5	42.5	20	17	10
579200013	12	3/8	7.5	32.5	42.5	20	21.5	10
579200014	12	1/2	9	35	47	24	21.5	10
579200015	14	1/2	9	35.5	47	24	21.5	10

# 57905

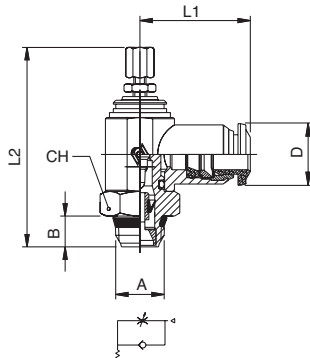
**REGOLATORE UNIDIREZIONALE ORIENTABILE PER CILINDRO SHORT REGOLAZIONE MANUALE**  
*ORIENTING FLOW REGULATOR FOR CYLINDER (SHORT) MANUAL REGULATION*



Codice Code	Tubo Tube	A	B	L1	L2min	L2max	CH	D	Conf. Pack.
579050002	4	M5	4	19	38.5	42.5	8	10	10
579050003	4	1/8	5.5	21	44	49	14	10	10
579050004	5	M5	4	20	38.5	42.5	8	12.5	10
579050005	5	1/8	5.5	21.5	44	49	14	12.5	10
579050006	5	1/4	7	24.5	48.5	55	17	12.5	10
579050007	6	M5	4	20.5	38.5	42.5	8	12.5	10
579050008	6	1/8	5.5	22.5	44	49	14	12.5	10
579050009	6	1/4	7	25	48.5	55	17	12.5	10
579050010	8	1/8	5.5	24	44	49	14	14	10
579050011	8	1/4	7	26	48.5	55	17	14	10
579050016	8	3/8	7.5	28.5	56	65	20	14	10
579050017	10	1/4	7	28.5	48.5	55	17	17	10
579050012	10	3/8	7.5	30.5	56	65	20	17	10
579050013	12	3/8	7.5	32.5	56	65	20	21.5	10
579050014	12	1/2	9	35	62	69	24	21.5	10
579050015	14	1/2	9	35.5	62	69	24	21.5	10

# 57915

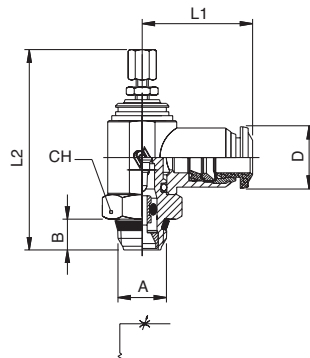
**REGOLATORE UNIDIREZIONALE ORIENTABILE PER VALVOLA SHORT REGOLAZIONE MANUALE**  
*ORIENTING FLOW REGULATOR FOR VALVE (SHORT) MANUAL REGULATION*



Codice Code	Tubo Tube	A	B	L1	L2min	L2max	CH	D	Conf. Pack.
579150002	4	M5	4	19	38.5	42.5	8	10	10
579150003	4	1/8	5.5	21	44	49	14	10	10
579150004	5	M5	4	20	38.5	42.5	8	12.5	10
579150005	5	1/8	5.5	21.5	44	49	14	12.5	10
579150006	5	1/4	7	24.5	48.5	55	17	12.5	10
579150007	6	M5	4	20.5	38.5	42.5	8	12.5	10
579150008	6	1/8	5.5	22.5	44	49	14	12.5	10
579150009	6	1/4	7	25	48.5	55	17	12.5	10
579150010	8	1/8	5.5	24	44	49	14	14	10
579150011	8	1/4	7	26	48.5	55	17	14	10
579150016	8	3/8	7.5	28.5	56	65	20	14	10
579150017	10	1/4	7	28.5	48.5	55	17	17	10
579150012	10	3/8	7.5	30.5	56	65	20	17	10
579150013	12	3/8	7.5	32.5	56	65	20	21.5	10
579150014	12	1/2	9	35	62	69	24	21.5	10
579150015	14	1/2	9	35.5	62	69	24	21.5	10

# 57925

**REGOLATORE BIDIREZIONALE ORIENTABILE SHORT REGOLAZIONE MANUALE**  
*ORIENTING BI-DIRECTIONAL FLOW REGULATOR (SHORT) MANUAL REGULATION*

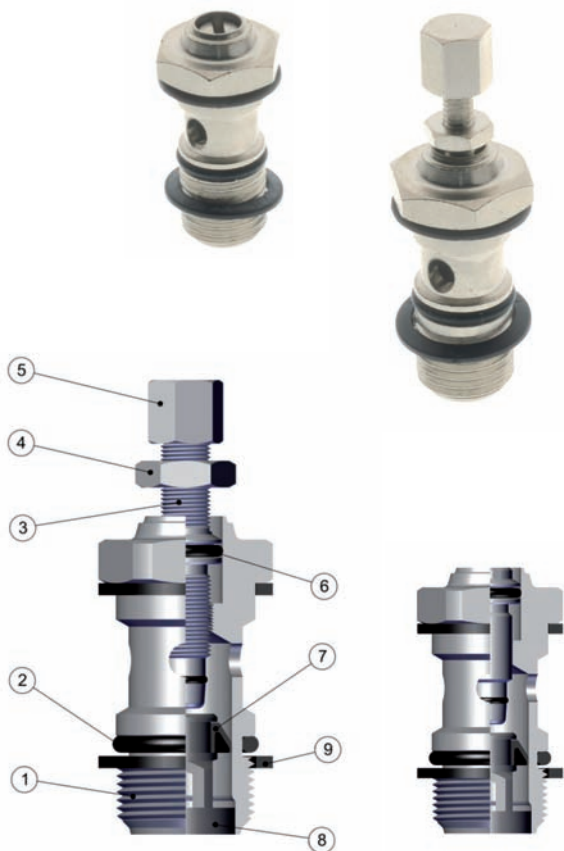


Codice Code	Tubo Tube	A	B	L1	L2min	L2max	CH	D	Conf. Pack.
579250002	4	M5	4	19	38.5	42.5	8	10	10
579250003	4	1/8	5.5	21	44	49	14	10	10
579250004	5	M5	4	20	38.5	42.5	8	12.5	10
579250005	5	1/8	5.5	21.5	44	49	14	12.5	10
579250006	5	1/4	7	24.5	48.5	55	17	12.5	10
579250007	6	M5	4	20.5	38.5	42.5	8	12.5	10
579250008	6	1/8	5.5	22.5	44	49	14	12.5	10
579250009	6	1/4	7	25	48.5	55	17	12.5	10
579250010	8	1/8	5.5	24	44	49	14	14	10
579250011	8	1/4	7	26	48.5	55	17	14	10
579250016	8	3/8	7.5	28.5	56	65	20	14	10
579250017	10	1/4	7	28.5	48.5	55	17	17	10
579250012	10	3/8	7.5	30.5	56	65	20	17	10
579250013	12	3/8	7.5	32.5	56	65	20	21.5	10
579250014	12	1/2	9	35	62	69	24	21.5	10
579250015	14	1/2	9	35.5	62	69	24	21.5	10



## Regolatori di portata Serie 8900 / Flow Regulators valves 8900 Series

### Caratteristiche Tecniche / Technical Characteristics



#### Pressioni / Pressures

Pressione minima / Minimum pressure: **1 bar (0.1 MPa)**  
 Pressione massima / Maximum pressure: **10 bar (1 MPa)**

#### Temperature / Temperatures

Temperatura minima / Minimum temperature: **-20 °C**  
 Temperatura massima / Maximum temperature: **+80 °C**

#### Filettature / Threads

Gas Cilindrica conforme ISO 228 classe A.  
 Parallel gas in conformity with ISO 228 class A.

#### Tubi di collegamento / Connection Tubes

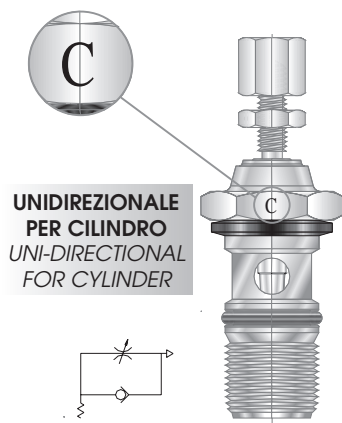
Tubi compatibili con il tipo di raccordo montato sul regolatore.  
 All the tubes compatible with the fitting's features assembled on the regulator.

#### Fluidi compatibili / Fluids

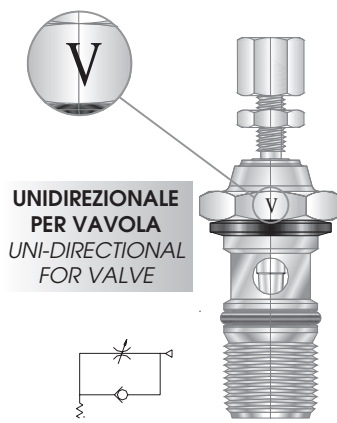
Aria filtrata / Filtered air.

### Materiali e Componenti / Component Parts and Materials

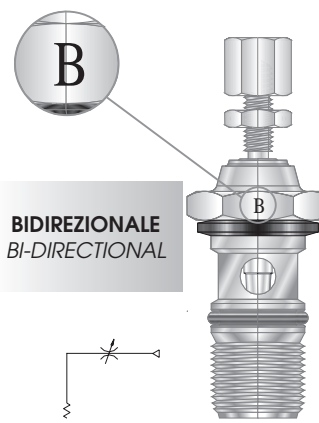
- |                                             |                                        |
|---------------------------------------------|----------------------------------------|
| 1 Corpo in Ottone nichelato                 | 1 Nickel-plated Brass Body             |
| 2 Guarnizione O-Ring in NBR                 | 2 NBR 70 O-RING Seals                  |
| 3 Spillo di Regolazione in Ottone nichelato | 3 Nickel-plated Brass Adjusting needle |
| 4 Ghiera di bloccaggio in Ottone nichelato  | 4 Nickel-plated Brass Locking nut      |
| 5 Pomolo di comando in ottone Nichelato     | 5 Nickel-plated Brass Adjusting knob   |
| 6 Guarnizione O-Ring in NBR                 | 6 NBR 70 O-RING Seals                  |
| 7 Guarnizione a labbro in NBR               | 7 NBR 70 Lip seal                      |
| 8 Supporto guarnizione in ottone Nichelato  | 8 Nickel-plated Brass Seal support     |
| 9 Rondella PA66 Art.1610                    | 9 PA66 Washer Art.1610                 |



Codice / Code  
8900 - 8905



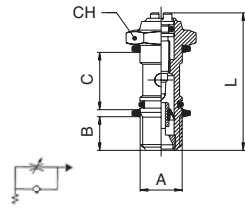
Codice / Code  
8910 - 8915



Codice / Code  
8920 - 8925

# 8900

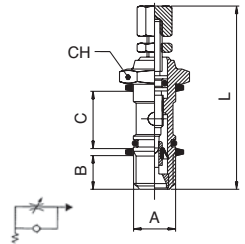
REGOLATORE DI FLUSSO UNIDIREZIONALE PER CILINDRO REGOLAZIONE A CACCIAVITE - *FLOW REGULATOR FOR CYLINDER. SCREWDRIVER REGULATION*



Codice Code	A	B	C	L	CH	Conf. Pack.
089000001	M5	4	12.5	24	8	10
089000002	1/8	5.5	15	30.5	14	10
089000003	1/4	8.5	17	35.5	17	10
089000004	3/8	9	20	41	20	10
089000005	1/2	10	24	47	24	10

# 8905

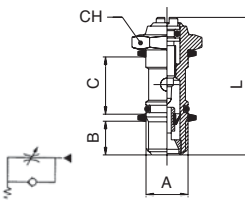
REGOLATORE DI FLUSSO UNIDIREZIONALE PER CILINDRO REGOLAZIONE MANUALE - *FLOW REGULATOR FOR CILINDER. MANUAL REGULATION*



Codice Code	A	B	C	Lmin	Lmax	CH	Conf. Pack.
089050001	M5	4	12.5	33	37.5	8	10
089050002	1/8	5.5	15	41	46.5	14	10
089050003	1/4	8.5	17	46.5	52.5	17	10
089050004	3/8	9	20	56.5	63.5	20	10
089050005	1/2	10	24	62	69.5	24	10

# 8910

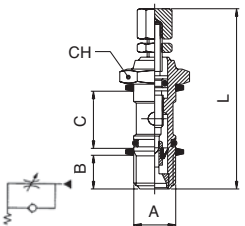
REGOLATORE DI FLUSSO UNIDIREZIONALE PER VALVOLA REGOLAZIONE A CACCIAVITE - *FLOW REGULATOR FOR VALVE. SCREWDRIVER REGULATION*



Codice Code	A	B	C	L	CH	Conf. Pack.
089100001	M5	4	12.5	24	8	10
089100002	1/8	5.5	15	30.5	14	10
089100003	1/4	8.5	17	35.5	17	10
089100004	3/8	9	20	41	20	10
089100005	1/2	10	24	47	24	10

# 8915

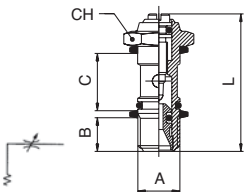
REGOLATORE DI FLUSSO UNIDIREZIONALE PER VALVOLA REGOLAZIONE MANUALE - *FLOW REGULATOR FOR VALVE MANUAL REGULATION*



Codice Code	A	B	C	Lmin	Lmax	CH	Conf. Pack.
089150001	M5	4	12.5	33	37.5	8	10
089150002	1/8	5.5	15	41	46.5	14	10
089150003	1/4	8.5	17	46.5	52.5	17	10
089150004	3/8	9	20	56.5	63.5	20	10
089150005	1/2	10	24	62	69.5	24	10

# 8920

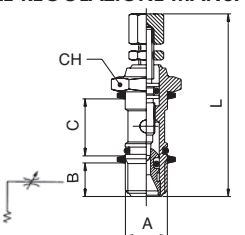
REGOLATORE DI FLUSSO BIDIREZIONALE REGOLAZIONE A CACCIAVITE - *BI-DIRECTIONAL FLOW REGULATOR SCREWDRIVER REGULATION*



Codice Code	A	B	C	L	CH	Conf. Pack.
089200001	M5	4	12.5	24	8	10
089200002	1/8	5.5	15	30.5	14	10
089200003	1/4	8.5	17	35.5	17	10
089200004	3/8	9	20	41	20	10
089200005	1/2	10	24	47	24	10

# 8925

REGOLATORE DI FLUSSO BIDIREZIONALE REGOLAZIONE MANUALE - *BI-DIRECTIONAL FLOW REGULATOR MANUAL REGULATION*



Codice Code	A	B	C	Lmin	Lmax	CH	Conf. Pack.
089250001	M5	4	12.5	33	37.5	8	10
089250002	1/8	5.5	15	41	46.5	14	10
089250003	1/4	8.5	17	46.5	52.5	17	10
089250004	3/8	9	20	56.5	63.5	20	10
089250005	1/2	10	24	62	69.5	24	10

# Regolatori di portata da M5 / Flow Regulators valves M5 Size

Nelle tabelle che seguono riportiamo le misure di raccordi orientabili Serie 1000, 50000 e 57000 che possono essere montati con i regolatori da M5. Le misure dell'art. 1500 sono state estrapolate dalla tabella dell'articolo stesso. Gli art. 50505 e 57505 sono invece raccordi prodotti appositamente per questa serie di regolatori di flusso da M5.

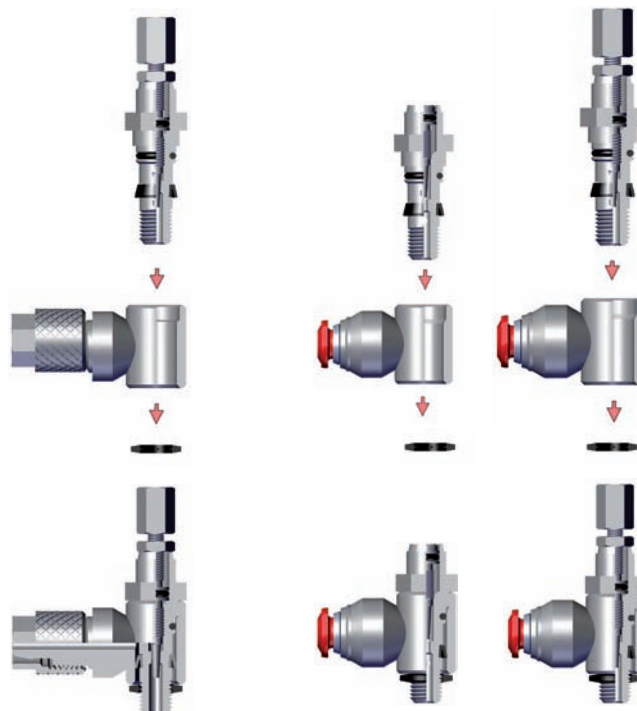
*In the following tables specify the sizes of the single banjo bodies for 1000 50000 and 57000 series which can be assembled with regulators M5. The sizes the art. 1500 have been taken from the standard single banjo bodies table. Art. 50505 and 57505 are special single banjo bodies produced suitably for the of flow regulators M5 range.*

**I Regolatori di portata da M5 devono essere accoppiati con i raccordi orientabili da M6.**

*The Flow Regulators size M5 must be assembled with orienting fittings size M6.*

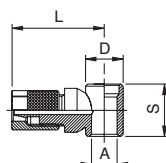
**Durante l'inserimento del regolatore nell'occhiello prestare attenzione a non rivoltare il labbro della guarnizione.**

*When you assemble the flow regulator into the banjo body, please be careful not damage the seal.*


**Serie 1000**
**Serie 50000 - 57000**

## 1500

**ANELLO ORIENTABILE A L (PER REGOLATORI DI PORTATA M5) - SINGLE BANJO BODY (ADJUSTABLE RESTRICTOR VALVES M5)**

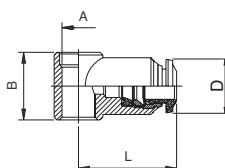


Codice Code	Tubo Tube	A	D	S	L	Conf. Pack.
015000002	4/2.7	M6	9	12.5	21.5	10
015000007	6/4	M6	9	12.5	21.5	10

**Questo articolo è prodotto appositamente per Regolatori di Portata da M5.**  
*This article has been produced suitably for the Adjustable Restrictor valves M5.*

## 50505

**ANELLO ORIENTABILE A L (PER REGOLATORI DI PORTATA M5) - SINGLE BANJO BODY (ADJUSTABLE RESTRICTOR VALVES M5)**

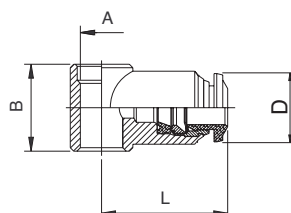


Codice Code	Tubo Tube	A	B	L	D	Conf. Pack.
505050005	3	M6	12.5	19	10	10
505050001	4	M6	12.5	19	10	10
505050003	5	M6	12.5	20	12.5	10
505050004	6	M6	12.5	20.5	12.5	10

**Questo articolo è prodotto appositamente per Regolatori di Portata da M5.**  
*This article has been produced suitably for the Adjustable Restrictor valves M5.*

## 57505

**ANELLO ORIENTABILE A L (PER REGOLATORI DI PORTATA M5) - SINGLE BANJO BODY (ADJUSTABLE RESTRICTOR VALVES M5)**



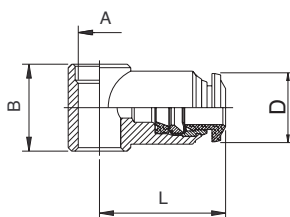
Codice Code	Tubo Tube	A	B	L	D	Conf. Pack.
*575050001	4 (5/32)	M6	12.5	18.5	10.5	10
575050003	5	M6	12.5	20	12.5	10
575050004	6	M6	12.5	21.5	12.5	10

**Questo articolo è prodotto appositamente per Regolatori di Portata da M5.**  
*This article has been produced suitably for the Adjustable Restrictor valves M5.*

**\* Articolo in comune con serie 89505**  
*\* Item in common with series 89505*

# 89505

ANELLO ORIENTABILE A L (PER REGOLATORI DI PORTATA M5) - SINGLE BANJO BODY (ADJUSTABLE RESTRICTOR VALVES M5)



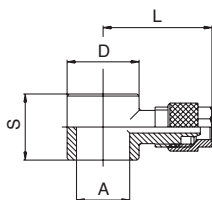
Codice Code	Tubo Tube	A	B	L	D	Conf. Pack.
*5750500001	5/32 (4)	M6	12.5	18.5	10.5	10
8950500001	1/8	M6	12.5	16.5	10.5	10
8950500003	1/4	M6	12.5	21.5	12.5	10

Questo articolo è prodotto appositamente per Regolatori di Portata da M5.  
This article has been produced suitably for the Adjustable Restrictor valves M5.

\*Articolo in comune con serie 57505  
\* Item in common with series 57505

# 1500

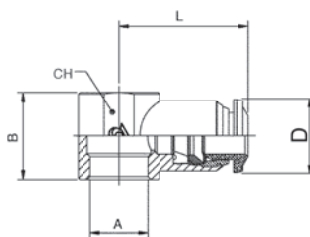
ANELLO ORIENTABILE A L - SINGLE BANJO BODY



Codice Code	Tubo Tube	A	D	S	L	Conf. Pack.
0150000003	4/2.7	1/8	14	15	23.3	10
0150000005	5/3	1/8	14	15	23.3	10
0150000008	6/4	1/8	14	15	23.3	10
0150000009	6/4	1/4	18	17	25.3	10
0150000010	6/4	3/8	21	20	26.8	10
0150000011	8/6	1/8	14	15	24.7	10
0150000012	8/6	1/4	18	17	27.6	10
0150000013	8/6	3/8	21	20	27.7	10
0150000014	8/6	1/2	26	24	31.2	10
0150000015	10/8	1/8	14	15	27.5	10
0150000016	10/8	1/4	18	17	29.5	10
0150000017	10/8	3/8	21	20	30.5	10
0150000018	10/8	1/2	26	24	34	10
0150000019	12/10	3/8	21	20	31.5	10
0150000020	12/10	1/2	26	24	35	10
0150000021	15/12.5	1/2	26	24	36.5	10

# 50500

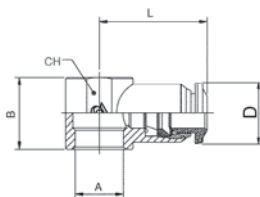
ANELLO ORIENTABILE A L - SINGLE BANJO BODY



Codice Code	Tubo Tube	A	B	L	CH	D	Conf. Pack.
5050000003	4	1/8	15	21	14	10	10
5050000014	5	1/8	15	21.5	14	12.5	10
5050000015	5	1/4	17	24.5	18	12.5	10
5050000004	6	1/8	15	22	14	12.5	10
5050000005	6	1/4	17	25	18	12.5	10
5050000006	8	1/8	15	24	14	14	10
5050000007	8	1/4	17	26	18	14	10
5050000008	8	3/8	20	28	21	14	10
5050000009	10	1/4	17	29	18	17	10
5050000010	10	3/8	20	30.5	21	17	10
5050000012	12	3/8	20	32.5	21	21.5	10
5050000021	12	1/2	24	35	25	21.5	10
5050000022	14	1/2	24	35.5	25	21.5	10

# 57500

ANELLO ORIENTABILE A L - SINGLE BANJO BODY

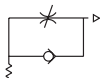
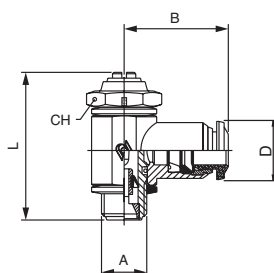


Codice Code	Tubo Tube	A	B	L	CH	D	Conf. Pack.
5750000003	4	1/8	15	21	14	10	10
5750000014	5	1/8	15	21.5	14	12.5	10
5750000015	5	1/4	17	24.5	18	12.5	10
5750000004	6	1/8	15	22	14	12.5	10
5750000005	6	1/4	17	25	18	12.5	10
5750000006	8	1/8	15	24	14	14	10
5750000007	8	1/4	17	26	18	14	10
5750000008	8	3/8	20	28	21	14	10
5750000009	10	1/4	17	29	18	17	10
5750000010	10	3/8	20	30.5	21	17	10
5750000012	12	3/8	20	32.5	21	21.5	10
5750000021	12	1/2	24	35	25	21.5	10
5750000022	14	1/2	24	35.5	25	21.5	10



# 8953

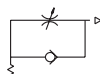
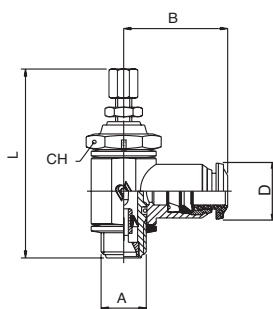
## REGOLATORE UNIDIREZIONALE PER CILINDRO REGOLAZIONE A CACCIAVITE UNI-DIRECTIONAL FLOW REGULATOR FOR CYLINDER SCREWDRIVER REGULATION



Codice Code	Tubo Tube	A	B	L	CH	D	Conf. Pack.
0895300012	3	M5	19	24	8	10	10
0895300001	4	M5	19	24	8	10	10
0895300002	4	1/8	21	30.5	14	10	10
0895300007	5	M5	20	24	8	12.5	10
0895300008	5	1/8	21.5	30.5	14	12.5	10
0895300009	5	1/4	24.5	35.5	17	12.5	10
0895300010	6	M5	20.5	24	8	12.5	10
0895300003	6	1/8	22.5	30.5	14	12.5	10
0895300004	6	1/4	25	35.5	17	12.5	10
0895300005	8	1/8	24	30.5	14	14	10
0895300006	8	1/4	26	35.5	17	14	10
0895300017	8	3/8	28	35.5	20	14	10
0895300011	10	1/4	29	35.5	17	17	10
0895300013	10	3/8	30.5	35.5	20	17	10
0895300014	12	3/8	32.5	35.5	20	21.5	10
0895300015	12	1/2	35	35.5	24	21.5	10
0895300016	14	1/2	35.5	35.5	24	21.5	10

# 8958

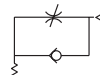
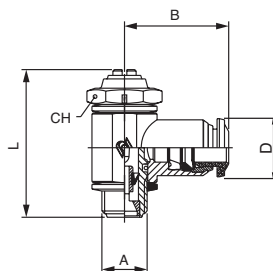
## REGOLATORE UNIDIREZIONALE PER CILINDRO REGOLAZIONE MANUALE UNI-DIRECTIONAL FLOW REGULATOR FOR CYLINDER MANUAL REGULATION



Codice Code	Tubo Tube	A	B	Lmin	Lmax	CH	D	Conf. Pack.
0895800013	3	M5	19	33	37.5	8	10	10
0895800001	4	M5	19	33	37.5	8	10	10
0895800002	4	1/8	21	41	46.5	14	10	10
0895800011	5	M5	20	33	37.5	8	12.5	10
0895800008	5	1/8	21.5	41	46.5	14	12.5	10
0895800009	5	1/4	24.5	46.5	52.5	17	12.5	10
0895800012	6	M5	20.5	33	37.5	8	12.5	10
0895800003	6	1/8	22.5	41	46.5	14	12.5	10
0895800004	6	1/4	25	46.5	52.5	17	12.5	10
0895800005	8	1/8	24	41	46.5	14	14	10
0895800006	8	1/4	26	46.5	52.5	17	14	10
0895800007	8	3/8	28	56.5	63.5	20	14	10
0895800010	10	1/4	29	46.5	52.5	17	17	10
0895800014	10	3/8	30.5	56.5	63.5	20	17	10
0895800015	12	3/8	32.5	56.5	63.5	20	21.5	10
0895800016	12	1/2	35	62	69.5	24	21.5	10
0895800017	14	1/2	35.5	62	69.5	24	21.5	10

# 8963

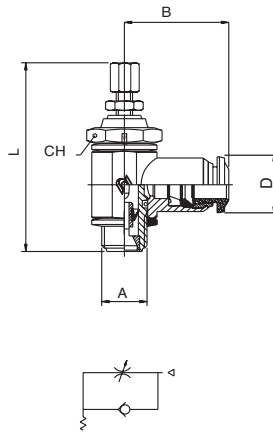
## REGOLATORE UNIDIREZIONALE PER VALVOLA REGOLAZIONE A CACCIAVITE UNI-DIRECTIONAL FLOW REGULATOR FOR VALVE SCREWDRIVER REGULATION



Codice Code	Tubo Tube	A	B	L	CH	D	Conf. Pack.
0896300012	3	M5	19	24	8	10	10
0896300001	4	M5	19	24	8	10	10
0896300002	4	1/8	21	30.5	14	10	10
0896300007	5	M5	20	24	8	12.5	10
0896300008	5	1/8	21.5	30.5	14	12.5	10
0896300009	5	1/4	24.5	35.5	17	12.5	10
0896300010	6	M5	20.5	24	8	12.5	10
0896300003	6	1/8	22.5	30.5	14	12.5	10
0896300004	6	1/4	25	35.5	17	12.5	10
0896300005	8	1/8	24	30.5	14	14	10
0896300006	8	1/4	26	35.5	17	14	10
0896300011	8	3/8	28	35.5	20	14	10
0896300014	10	1/4	29	35.5	17	17	10
0896300013	10	3/8	30.5	35.5	20	17	10
0896300015	12	3/8	32.5	35.5	20	21.5	10
0896300016	12	1/2	35	35.5	24	21.5	10
0896300017	14	1/2	35.5	35.5	24	21.5	10

# 8968

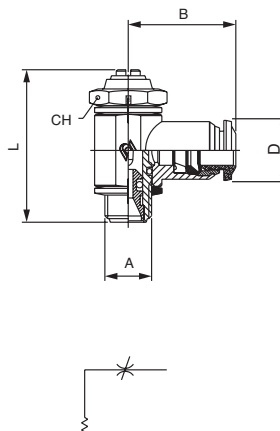
## REGOLATORE UNIDIREZIONALE PER VALVOLA REGOLAZIONE MANUALE UNI-DIRECTIONAL FLOW REGULATOR FOR VALVE MANUAL REGULATION



Codice Code	Tubo Tube	A	B	Lmin	Lmax	CH	D	Conf. Pack.
089680009	3	M5	19	33	37.5	8	10	10
089680001	4	M5	19	33	37.5	8	10	10
089680002	4	1/8	21	41	46.5	14	10	10
089680011	5	M5	20	33	37.5	8	12.5	10
089680007	5	1/8	21.5	41	46.5	14	12.5	10
089680008	5	1/4	24.5	46.5	52.5	17	12.5	10
089680012	6	M5	20.5	33	37.5	8	12.5	10
089680003	6	1/8	22.5	41	46.5	14	12.5	10
089680004	6	1/4	25	46.5	52.5	17	12.5	10
089680005	8	1/8	24	41	46.5	14	14	10
089680006	8	1/4	26	46.5	52.5	17	14	10
089680013	8	3/8	28	56.5	63.5	20	14	10
089680014	10	1/4	29	46.5	52.5	17	17	10
089680015	10	3/8	30.5	56.5	63.5	20	17	10
089680016	12	3/8	32.5	56.5	63.5	20	21.5	10
089680017	12	1/2	35	62	69.5	24	21.5	10
089680018	14	1/2	35.5	62	69.5	24	21.5	10

# 8973

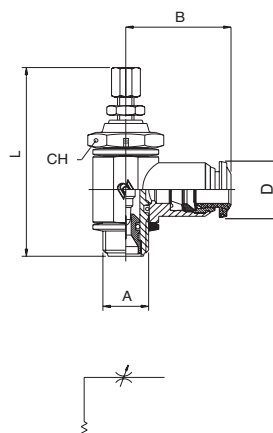
## REGOLATORE BIDIREZIONALE REGOLAZIONE A CACCIAVITE BI-DIRECTIONAL FLOW REGULATOR SCREWDRIVER REGULATION



Codice Code	Tubo Tube	A	B	L	CH	D	Conf. Pack.
089730012	3	M5	19	24	8	10	10
089730001	4	M5	19	24	8	10	10
089730002	4	1/8	21	30.5	14	10	10
089730007	5	M5	20	24	8	12.5	10
089730008	5	1/8	21.5	30.5	14	12.5	10
089730009	5	1/4	24.5	35.5	17	12.5	10
089730010	6	M5	20.5	24	8	12.5	10
089730003	6	1/8	22.5	30.5	14	12.5	10
089730004	6	1/4	25	35.5	17	12.5	10
089730005	8	1/8	24	30.5	14	14	10
089730006	8	1/4	26	35.5	17	14	10
089730013	8	3/8	28	35.5	20	14	10
089730014	10	1/4	29	35.5	17	17	10
089730015	10	3/8	30.5	35.5	20	17	10
089730016	12	3/8	32.5	35.5	20	21.5	10
089730017	12	1/2	35	35.5	24	21.5	10
089730018	14	1/2	35.5	35.5	24	21.5	10

# 8978

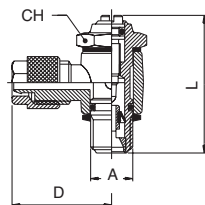
## REGOLATORE BIDIREZIONALE REGOLAZIONE MANUALE BI-DIRECTIONAL FLOW REGULATOR MANUAL REGULATION



Codice Code	Tubo Tube	A	B	Lmin	Lmax	CH	D	Conf. Pack.
089780007	3	M5	19	33	37.5	8	10	10
089780001	4	M5	19	33	37.5	8	10	10
089780002	4	1/8	21	41	46.5	14	10	10
089780011	5	M5	20	33	37.5	8	12.5	10
089780008	5	1/8	21.5	41	46.5	14	12.5	10
089780009	5	1/4	24.5	46.5	52.5	17	12.5	10
089780012	6	M5	20.5	33	37.5	8	12.5	10
089780003	6	1/8	22.5	41	46.5	14	12.5	10
089780004	6	1/4	25	46.5	52.5	17	12.5	10
089780005	8	1/8	24	41	46.5	14	14	10
089780006	8	1/4	26	46.5	52.5	17	14	10
089780010	8	3/8	28	56.5	63.5	20	14	10
089780013	10	1/4	29	46.5	52.5	17	17	10
089780014	10	3/8	30.5	56.5	63.5	20	17	10
089780015	12	3/8	32.5	56.5	63.5	20	21.5	10
089780016	12	1/2	35	62	69.5	24	21.5	10
089780017	14	1/2	35.5	62	69.5	24	21.5	10

# 8950

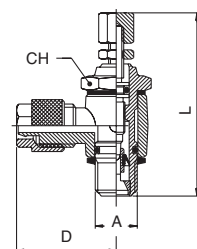
## REGOLATORE UNIDIREZIONALE PER CILINDRO REGOLAZIONE A CACCIAVITE UNI-DIRECTIONAL FLOW REGULATOR FOR CYLINDER SCREWDRIVER REGULATION



Codice Code	Tubo Tube	A	D	L	CH	Conf. Pack.
089500001	4/2.7	M5	21.5	24	8	10
089500002	4/2.7	1/8	23.3	30.5	14	10
089500003	6/4	M5	21.5	24	8	10
089500004	6/4	1/8	23.3	30.5	14	10
089500005	6/4	1/4	25.3	35.5	17	10
089500006	8/6	1/8	24.7	30.5	14	10
089500007	8/6	1/4	27.6	35.5	17	10
089500015	8/6	3/8	27.7	41	20	10
089500008	10/8	1/4	29.5	35.5	17	10
089500011	10/8	3/8	30.5	41	20	10
089500012	12/10	3/8	31.5	41	20	10
089500013	12/10	1/2	35	47	24	10
089500014	15/12.5	1/2	36.5	47	24	10

# 8955

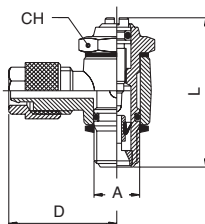
## REGOLATORE UNIDIREZIONALE PER CILINDRO REGOLAZIONE MANUALE UNI-DIRECTIONAL FLOW REGULATOR FOR CYLINDER MANUAL REGULATION



Codice Code	Tubo Tube	A	D	Lmin	Lmax	CH	Conf. Pack.
089550001	4/2.7	M5	21.5	33	37.5	8	10
089550002	4/2.7	1/8	23.3	41	46.5	14	10
089550003	6/4	M5	21.5	33	37.5	8	10
089550004	6/4	1/8	23.3	41	46.5	14	10
089550005	6/4	1/4	25.3	46.5	52.5	17	10
089550006	8/6	1/8	24.7	41	46.5	14	10
089550007	8/6	1/4	27.6	46.5	52.5	17	10
089550015	8/6	3/8	27.7	56.5	63.5	20	10
089550008	10/8	1/4	29.5	46.5	52.5	17	10
089550011	10/8	3/8	30.5	56.5	63.5	20	10
089550012	12/10	3/8	31.5	56.5	63.5	20	10
089550013	12/10	1/2	35	62	69.5	24	10
089550014	15/12.5	1/2	36.5	62	69.5	24	10

# 8960

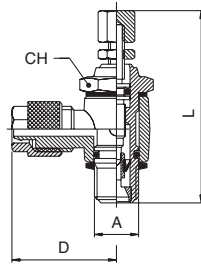
## REGOLATORE UNIDIREZIONALE PER VALVOLA REGOLAZIONE A CACCIAVITE UNI-DIRECTIONAL FLOW REGULATOR FOR VALVE SCREWDRIVER REGULATION



Codice Code	Tubo Tube	A	D	L	CH	Conf. Pack.
089600001	4/2.7	M5	21.5	24	8	10
089600002	4/2.7	1/8	23.3	30.5	14	10
089600003	6/4	M5	21.5	24	8	10
089600004	6/4	1/8	23.3	30.5	14	10
089600005	6/4	1/4	25.3	35.5	17	10
089600006	8/6	1/8	24.7	30.5	14	10
089600007	8/6	1/4	27.6	35.5	17	10
089600015	8/6	3/8	27.7	41	20	10
089600008	10/8	1/4	29.5	35.5	17	10
089600011	10/8	3/8	30.5	41	20	10
089600012	12/10	3/8	31.5	41	20	10
089600013	12/10	1/2	35	47	24	10
089600014	15/12.5	1/2	36.5	47	24	10

# 8965

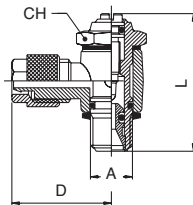
## REGOLATORE UNIDIREZIONALE PER VALVOLA REGOLAZIONE MANUALE UNI-DIRECTIONAL FLOW REGULATOR FOR VALVE MANUAL REGULATION



Codice Code	Tubo Tube	A	D	Lmin	Lmax	CH	Conf. Pack.
0896500001	4/2.7	M5	21.5	33	37.5	8	10
0896500002	4/2.7	1/8	23.3	41	46.5	14	10
0896500003	6/4	M5	21.5	33	37.5	8	10
0896500004	6/4	1/8	23.3	41	46.5	14	10
0896500005	6/4	1/4	25.3	46.5	52.5	17	10
0896500006	8/6	1/8	24.7	41	46.5	14	10
0896500007	8/6	1/4	27.6	46.5	52.5	17	10
0896500015	8/6	3/8	27.7	56.5	63.5	20	10
0896500008	10/8	1/4	29.5	46.5	52.5	17	10
0896500011	10/8	3/8	30.5	56.5	63.5	20	10
0896500012	12/10	3/8	31.5	56.5	63.5	20	10
0896500013	12/10	1/2	35	62	69.5	24	10
0896500014	15/12.5	1/2	36.5	62	69.5	24	10

# 8970

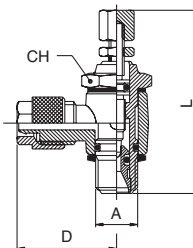
## REGOLATORE BIDIREZIONALE REGOLAZIONE A CACCIAVITE BI-DIRECTIONAL FLOW REGULATOR SCREWDRIVER REGULATION



Codice Code	Tubo Tube	A	D	L	CH	Conf. Pack.
0897000001	4/2.7	M5	21.5	24	8	10
0897000002	4/2.7	1/8	23.3	30.5	14	10
0897000003	6/4	M5	21.5	24	8	10
0897000004	6/4	1/8	23.3	30.5	14	10
0897000005	6/4	1/4	25.3	35.5	17	10
0897000006	8/6	1/8	24.7	30.5	14	10
0897000007	8/6	1/4	27.6	35.5	17	10
0897000015	8/6	3/8	27.7	41	20	10
0897000008	10/8	1/4	29.5	35.5	17	10
0897000011	10/8	3/8	30.5	41	20	10
0897000012	12/10	3/8	31.5	41	20	10
0897000013	12/10	1/2	35	47	24	10
0897000014	15/12.5	1/2	36.5	47	24	10

# 8975

## REGOLATORE BIDIREZIONALE REGOLAZIONE MANUALE BI-DIRECTIONAL FLOW REGULATOR MANUAL REGULATION

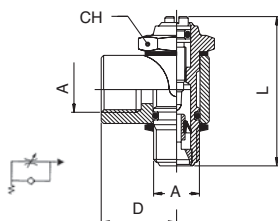


Codice Code	Tubo Tube	A	D	Lmin	Lmax	CH	Conf. Pack.
0897500001	4/2.7	M5	21.5	33	37.5	8	10
0897500002	4/2.7	1/8	23.3	41	46.5	14	10
0897500003	6/4	M5	21.5	33	37.5	8	10
0897500004	6/4	1/8	23.3	41	46.5	14	10
0897500005	6/4	1/4	25.3	46.5	52.5	17	10
0897500006	8/6	1/8	24.7	41	46.5	14	10
0897500007	8/6	1/4	27.6	46.5	52.5	17	10
0897500015	8/6	3/8	27.7	56.5	63.5	20	10
0897500008	10/8	1/4	29.5	46.5	52.5	17	10
0897500011	10/8	3/8	30.5	56.5	63.5	20	10
0897500012	12/10	3/8	31.5	56.5	63.5	20	10
0897500013	12/10	1/2	35	62	69.5	24	10
0897500014	15/12.5	1/2	36.5	62	69.5	24	10



# 8952

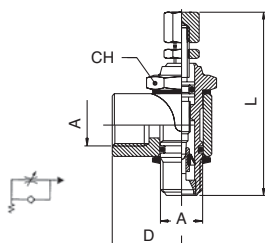
## REGOLATORE UNIDIREZIONALE PER CILINDRO REGOLAZIONE A CACCIAVITE UNI-DIRECTIONAL FLOW REGULATOR FOR CYLINDER SCREWDRIVER REGULATION



Codice Code	A	D	L	CH	Conf. Pack.
0895200001	1/8	16.5	30.5	14	10
0895200002	1/4	22	35.5	17	10
0895200003	3/8	26	35.5	20	10

# 8957

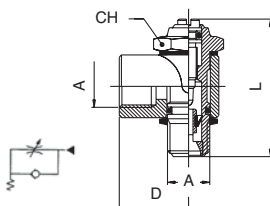
## REGOLATORE UNIDIREZIONALE PER CILINDRO REGOLAZIONE MANUALE UNI-DIRECTIONAL FLOW REGULATOR FOR CYLINDER MANUAL REGULATION



Codice Code	A	D	Lmin	Lmax	CH	Conf. Pack.
0895700001	1/8	16.5	41	46.5	14	10
0895700002	1/4	22	46.5	52.5	17	10
0895700003	3/8	26	56.5	63.5	17	10

# 8962

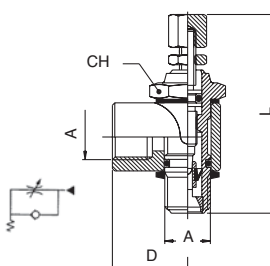
## REGOLATORE UNIDIREZIONALE PER VALVOLA REGOLAZIONE A CACCIAVITE UNI-DIRECTIONAL FLOW REGULATOR FOR VALVE SCREWDRIVER REGULATION



Codice Code	A	D	L	CH	Conf. Pack.
0896200001	1/8	16.5	30.5	14	10
0896200002	1/4	22	35.5	17	10
0896200003	3/8	26	35.5	20	10

# 8967

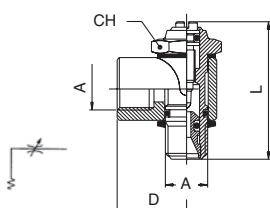
## REGOLATORE UNIDIREZIONALE PER VALVOLA REGOLAZIONE MANUALE UNI-DIRECTIONAL FLOW REGULATOR FOR VALVE MANUAL REGULATION



Codice Code	A	D	Lmin	Lmax	CH	Conf. Pack.
0896700001	1/8	16.5	41	46.5	14	10
0896700002	1/4	22	46.5	52.5	17	10
0896700003	3/8	26	56.5	63.5	17	10

# 8972

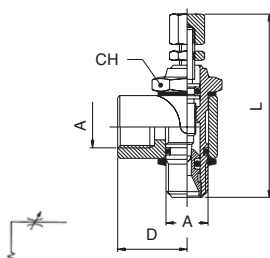
## REGOLATORE BIDIREZIONALE REGOLAZIONE A CACCIAVITE BI-DIRECTIONAL FLOW REGULATOR SCREWDRIVER REGULATION



Codice Code	A	D	L	CH	Conf. Pack.
0897200001	1/8	16.5	30.5	14	10
0897200002	1/4	22	35.5	17	10
0897200003	3/8	26	35.5	20	10

# 8977

## REGOLATORE BIDIREZIONALE REGOLAZIONE MANUALE BI-DIRECTIONAL FLOW REGULATOR MANUAL REGULATION



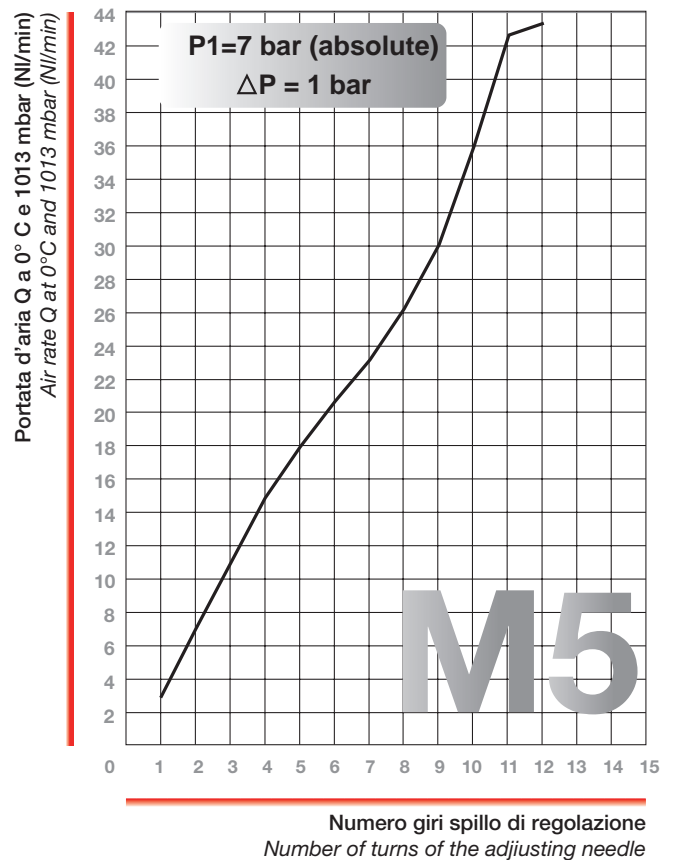
Codice Code	A	D	Lmin	Lmax	CH	Conf. Pack.
0897700001	1/8	16.5	41	46.5	14	10
0897700002	1/4	22	46.5	52.5	17	10
0897700003	3/8	26	56.5	63.5	17	10

**CARATTERISTICHE DI FLUSSO**  
**REGOLATORI DI PORTATA**  
**UNIDIREZIONALI E BIDIREZIONALI**  
*FLOW CHARACTERISTICS*  
*ADJUSTABLE RESTRICTOR*  
*VALVES UNI-DIRECTIONALS AND*  
*BI-DIRECTIONALS*

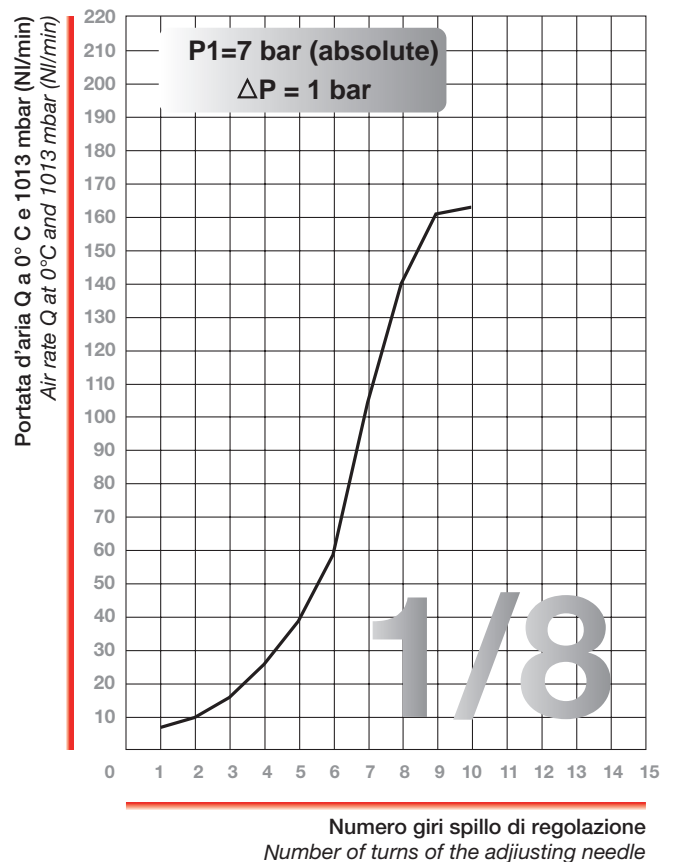
Riportiamo in questa pagina le caratteristiche di flusso dei regolatori per una corretta scelta della misura che più si adatta ad ogni specifico impiego.

*In this page you can find the flow characteristics of the regulators, which will help you to chose the most suitable size to satisfy every specific use.*

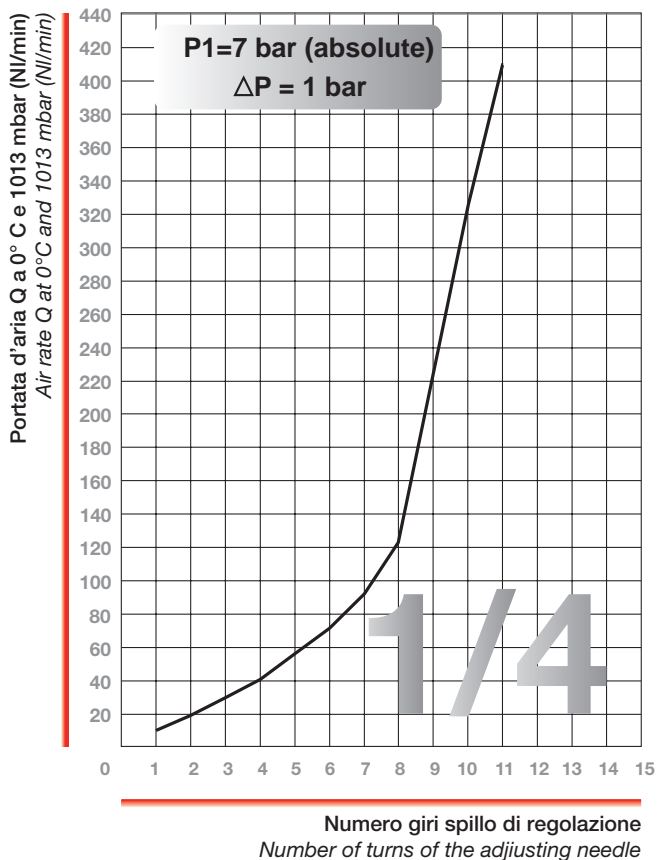
**REGOLATORI DI PORTATA M5 (DN 1.5)**  
**ADJUSTABLE RESTRICTOR VALVES M5 (DN 1.5)**



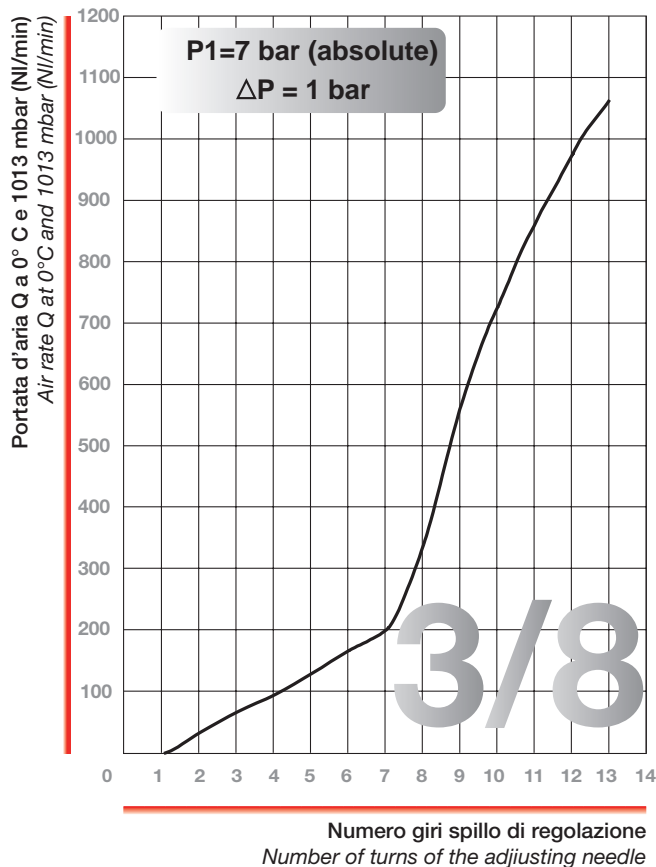
**REGOLATORI DI PORTATA 1/8 (DN 2)**  
**ADJUSTABLE RESTRICTOR VALVES 1/8 (DN 2)**



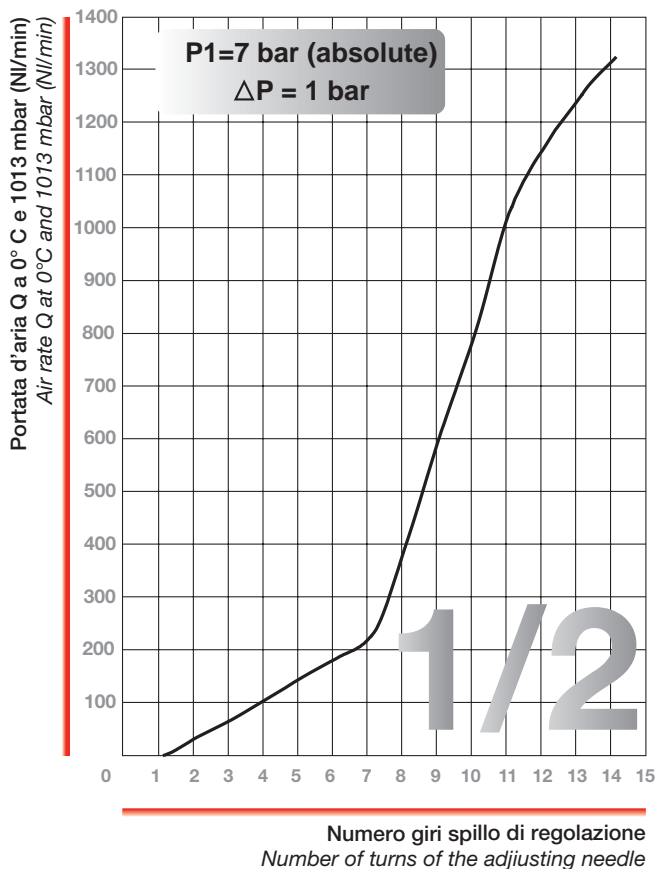
**REGOLATORI DI PORTATA 1/4 (DN 3.5)**  
 ADJUSTABLE RESTRICTOR VALVES 1/4 (DN 3.5)



**REGOLATORI DI PORTATA 3/8 (DN 6)**  
 ADJUSTABLE RESTRICTOR VALVES 3/8 (DN 6)

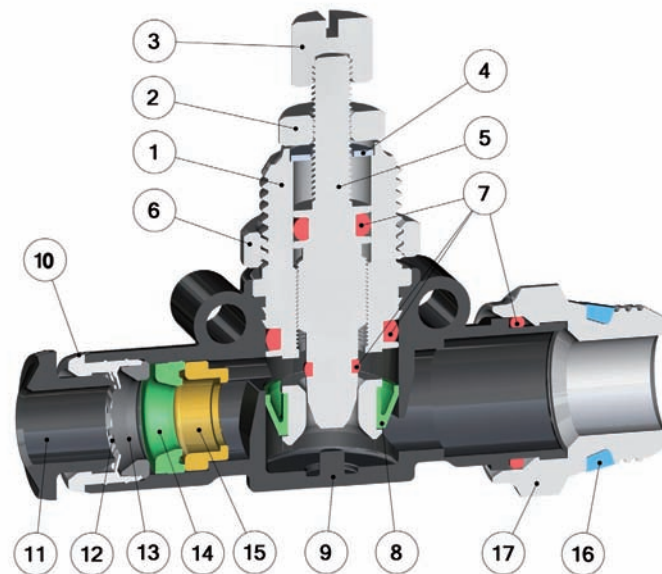


**REGOLATORI DI PORTATA 1/2 (DN 6)**  
 ADJUSTABLE RESTRICTOR VALVES 1/2 (DN 6)



## Regolatori di portata in Linea / *In Line Adjustable Restrictor valves*

### Caratteristiche Tecniche / *Technical Characteristics*



### Materiali e Componenti / *Component Parts and Materials*

- |                                             |                                        |
|---------------------------------------------|----------------------------------------|
| 1 Nipplo in Ottone Nichelato                | 1 Nickel-Plated Brass Nipple           |
| 2 Ghiera di Bloccaggio in Ottone Nichelato  | 2 Nickel-Plated Brass Locking nut      |
| 3 Pomolo di comando in Ottone Nichelato     | 3 Nickel-Plated Brass Adjusting Knob   |
| 4 Rondella in acciaio AISI 304              | 4 Steel AISI 304 Washer                |
| 5 Spillo di regolazione in Ottone Nichelato | 5 Nickel-Plated Brass Adjusting needle |
| 6 Ghiera in ottone nichelato                | 6 Nickel-plated brass sleeve           |
| 7 Guarnizione O-Ring in NBR                 | 7 NBR O-Ring seal                      |
| 8 Guarnizione a labbro in NBR               | 8 NBR Lip seal                         |
| 9 Corpo in tecnopolimero                    | 9 Technopolymeric Body                 |
| 10 Capsula in ottone nichelato              | 10 Nickel-Plated Brass Capsule         |
| 11 Spintore sgancio tubo in resina acetlica | 11 Acetalic resin Collet               |
| 12 Pinza d'aggraffaggio in acciaio AISI 301 | 12 Steel AISI 301 Clamping Washer      |
| 13 Anello di sicurezza in tecnopolimero     | 13 Technopolymeric safety Ring         |
| 14 Guarnizione a labbro in NBR              | 14 NBR Lip seal                        |
| 15 Supporto guida tubo in ottone            | 15 Brass Tube-guide Support            |
| 16 Guarnizione filetto in NBR               | 16 NBR Thread Packing                  |
| 17 Basetta in ottone nichelato              | 17 Nickel-Plated Brass Base            |

### Pressioni / *Pressures*

Pressione minima / *Minimum pressure*: **1 bar** (0.1 MPa)  
 Pressione massima / *Maximum pressure*: **10 bar** (1 MPa)

### Temperature / *Temperatures*

Temperatura minima / *Minimum temperature*: **-20 °C**  
 Temperatura massima / *Maximum temperature*: **+80 °C**

### Filettature / *Threads*

Gas conica "short" / "Short" Tapered thread.  
 Metrica conforme ISO R/262 / *Metric in conformity with ISO R/262.*

### Tubi di collegamento / *Connection Tubes*

Tubi in materiale plastico:  
 PA6, PA11, PA12, Polietilene, \*Poliuretano, FEP, PTFE.  
 \*Per tubi in Poliuretano é consigliata una durezza di 98 shore.  
*Plastic tubes:*  
 PA6, PA11, PA12, Polyethylene, \*Polyurethane, FEP, PTFE.  
 \*For Polyurethane hoses it is required a minimum hardness of 98 shore.

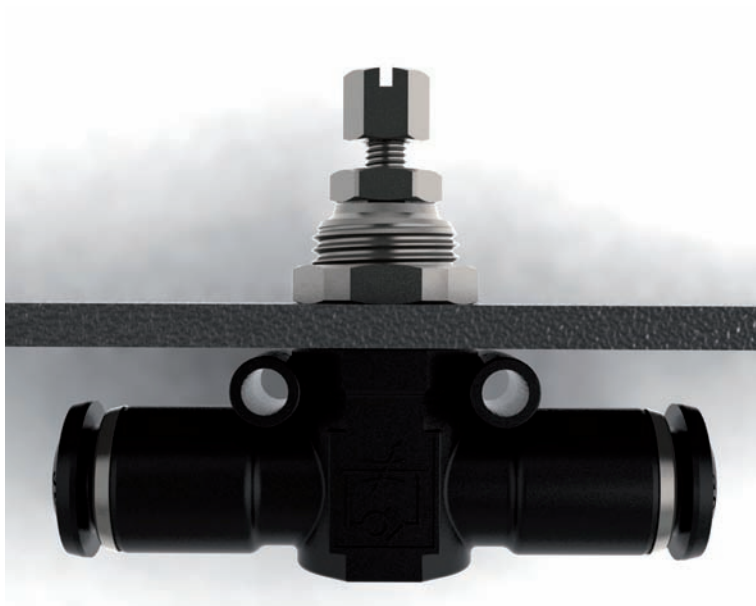
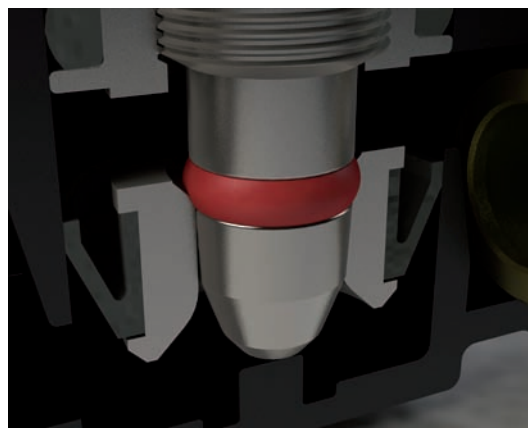
### Fluidi compatibili / *Fluids*

Aria compressa / *Compressed air.*



**Le Principali Caratteristiche / The Most Important Characteristics**

**La presenza di un O-ring sullo spillo, garantisce una completa tenuta del regolatore.**  
*The O-ring on the needle, allows the complete, sealing of the regulator.*



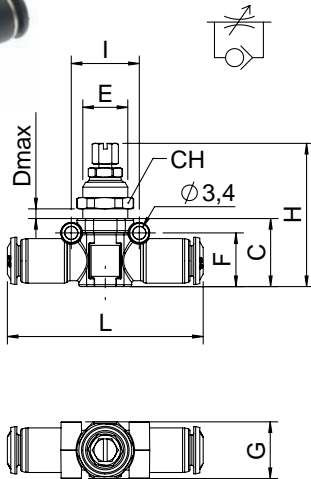
**Il montaggio a pannello, è possibile mediante il nipplo filettato e l'apposita ghiera.**  
*Wall mounting, possible through the nipple and threaded ring nut.*

**E' previsto il montaggio a parete, mediante viti da M3 inserite nelle apposite sedi.**  
*It provided for wall mounting, with M3 screws inserted into the appropriate locations.*



# 55940

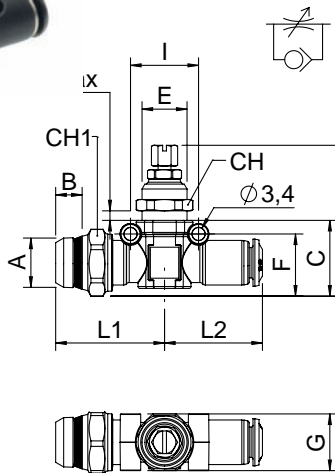
**REGOLATORE IN LINEA UNIDIREZIONALE TUBO-TUBO**  
*TUBE IN-LINE NEEDLE VALVE (UNIDIRECTIONAL FLOW)*



Codice Code	Tubo Tube	C	D	E	F	G	H	I	L	CH	Conf. Pack.
559400004	4	18	4	M12x1	14.5	15	37.5÷43.5	18	52	14	10
559400001	6	18	6	M12x1	14.5	15	37.5÷43.5	18	52	14	10
559400002	8	20	6.5	M14x1	16.5	17	39.5÷45.5	20	58	16	10
559400003	10	23.5	8	M16x1	19.5	19	47.5÷53.5	22.5	67	18	10

# 55945

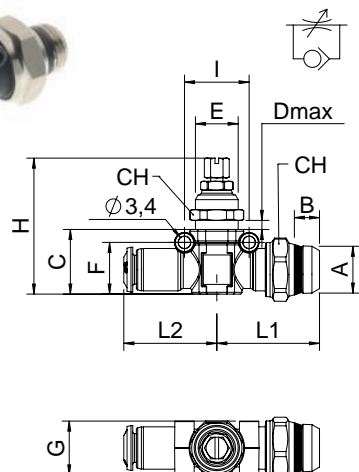
**REGOLATORE IN LINEA UNIDIREZIONALE PER CILINDRO MASCHIO SHORT-TUBO**  
*MALE SHORT-TUBE IN-LINE FLOW CONTROL (CONTROLLED FLOW OUT)*



Codice Code	Tubo Tube	A	B	C	D	E	F	G	H	I	L1	L2	CH	CH1	Conf. Pack.
559450007	4 1/8	5.5	20	6	M12x1	16.5	15	39.5÷45.5	18	28.5	26	14	16	10	
559450001	6 1/8	5.5	20	6	M12x1	16.5	15	39.5÷45.5	18	28.5	26	14	16	10	
559450002	6 1/4	7	20	6	M12x1	16.5	15	39.5÷45.5	18	28.5	26	14	16	10	
559450003	8 1/4	7	23	6.5	M14x1	16.5	17	42.5÷48.5	20	33.5	29	16	20	10	
559450004	8 3/8	7.5	23	6.5	M14x1	16.5	17	42.5÷48.5	20	33.5	29	16	20	10	
559450005	10 3/8	7.5	24.5	8	M16x1	20.5	19	42.5÷54	22.5	34.5	33.5	18	20	10	
559450006	10 1/2	9	25	8	M16x1	21	19	42.5÷54.5	22.5	34.5	33.5	18	21	10	

# 55950

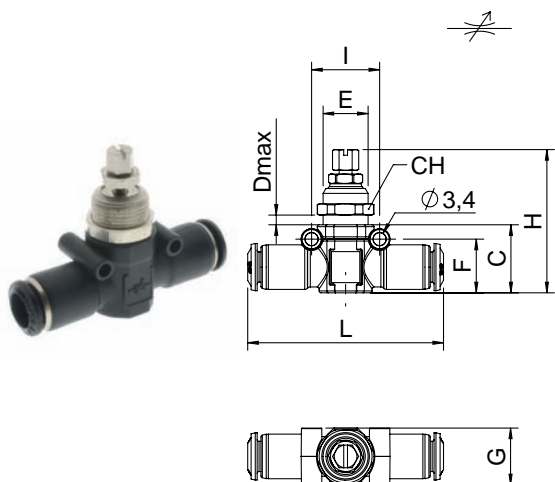
**REGOLATORE IN LINEA UNIDIREZIONALE PER VALVOLA TUBO- MASCHIO SHORT**  
*MALE SHORT-TUBE IN-LINE FLOW CONTROL (CONTROLLED FLOW IN)*



Codice Code	Tubo Tube	A	B	C	D	E	F	G	H	I	L1	L2	CH	CH1	Conf. Pack.
559500007	4 1/8	5.5	20	6	M12x1	16.5	15	39.5÷45.5	18	29	26	14	16	10	
559500001	6 1/8	5.5	20	6	M12x1	16.5	15	39.5÷45.5	18	29	26	14	16	10	
559500002	6 1/4	7	20	6	M12x1	16.5	15	39.5÷45.5	18	29	26	14	16	10	
559500003	8 1/4	7	23	6.5	M14x1	16.5	17	42.5÷48.5	20	33.5	29	16	20	10	
559500004	8 3/8	7.5	23	6.5	M14x1	16.5	17	42.5÷48.5	20	33.5	29	16	20	10	
559500005	10 3/8	7.5	24.5	8	M16x1	20.5	19	42.5÷54	22.5	34.5	33.5	18	20	10	
559500006	10 1/2	9	25	8	M16x1	21	19	42.5÷54.5	22.5	34.5	33.5	18	21	10	

# 55955

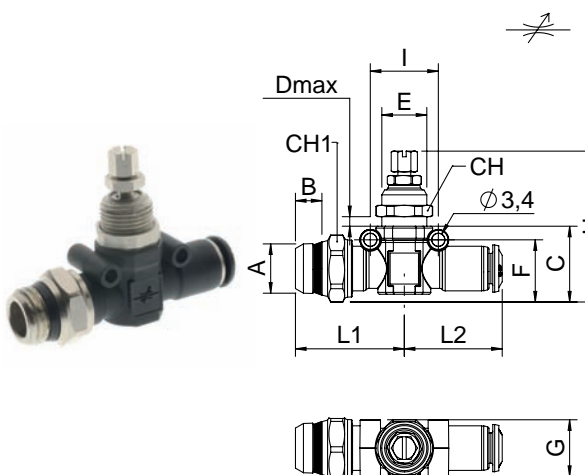
## REGOLATORE IN LINEA BIDIREZIONALE TUBO-TUBO TUBE IN-LINE NEEDLE VALVE (BIDIRECTIONAL FLOW)



Codice Code	Tubo Tube	C	D	E	F	G	H	I	L	CH	Conf. Pack.
5595500004	4	18	6	M12x1	14.5	15	37.5-43.5	18	52	14	10
5595500001	6	18	6	M12x1	14.5	15	37.5-43.5	18	52	14	10
5595500002	8	20	6.5	M14x1	16.5	17	39.5-45.5	20	58	16	10
5595500003	10	23.5	8	M16x1	19.5	19	47.5-53.5	22.5	67	18	10

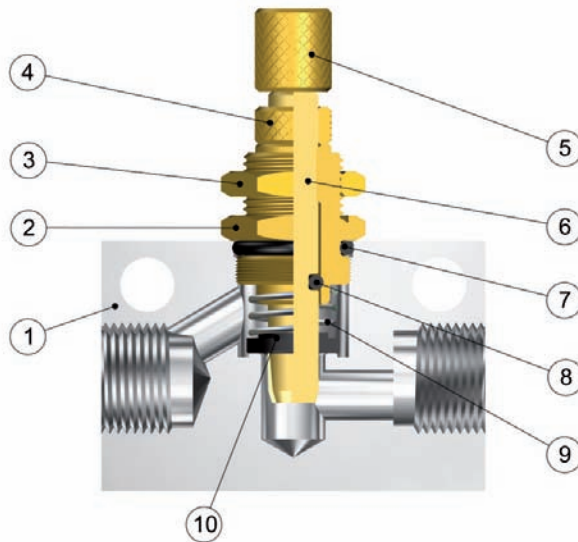
# 55960

## REGOLATORE IN LINEA BIDIREZIONALE MASCHIO SHORT-TUBO MALE SHORT-TUBE IN-LINE FLOW CONTROL (BIDIRECTIONAL FLOW)



Codice Code	Tubo Tube	A	B	C	D	E	F	G	H	I	L1	L2	CH	CH1	Conf. Pack
5596000007	4 1/8	5.5	20	6	M12x1	16.5	15	39.5-45.5	18	28.5	26	14	16	10	
5596000001	6 1/8	5.5	20	6	M12x1	16.5	15	39.5-45.5	18	28.5	26	14	16	10	
5596000002	6 1/4	7	20	6	M12x1	16.5	15	39.5-45.5	18	28.5	26	14	16	10	
5596000003	8 1/4	7	23	6.5	M14x1	16.5	17	42.5-48.5	20	33.5	29	16	20	10	
5596000004	8 3/8	7.5	23	6.5	M14x1	16.5	17	42.5-48.5	20	33.5	29	16	20	10	
5596000005	10 3/8	7.5	24.5	8	M16x1	20.5	19	42.5-54	22.5	34.5	33.5	18	20	10	
5596000006	10 1/2	9	25	8	M16x1	21	19	42.5-54.5	22.5	34.5	33.5	18	21	10	

# Regolatori di Flusso Unidirezionali / Uni-directional Flow Regulator



## Materiali e Componenti / Component Parts and Materials

- |                                 |                                  |
|---------------------------------|----------------------------------|
| 1 Corpo in alluminio anodizzato | 1 Anodized aluminium Body        |
| 2 Nipplo in ottone              | 2 Brass Nipple                   |
| 3 Ghiera di fissaggio in ottone | 3 Brass Locking nut              |
| 4 Ghiera in ottone              | 4 Brass Nut                      |
| 5 Pomolo in ottone              | 5 Brass Adjusting Knob           |
| 6 Spillo in ottone              | 6 Brass Adjusting needle         |
| 7 O-Ring Nipplo in NBR 70       | 7 NBR 70 O-Ring Nipple           |
| 8 O-Ring Spillo in NBR 70       | 8 NBR 70 O-Ring Adjusting needle |
| 9 Molla in acciaio              | 9 Steel Spring                   |
| 10 Guarnizione flottante        | 10 Seal floating washer          |

## Pressioni / Pressures

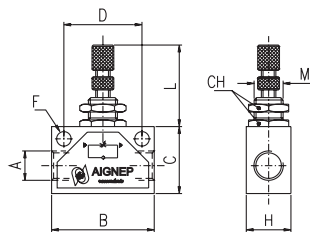
Pressione minima / Minimum pressure: **1 bar** (0.1 MPa)  
 Pressione massima / Maximum pressure: **10 bar** (1.5 MPa)

## Temperature / Temperatures

Temperatura minima / Minimum temperature: **-20 °C**  
 Temperatura massima / Maximum temperature: **+80 °C**

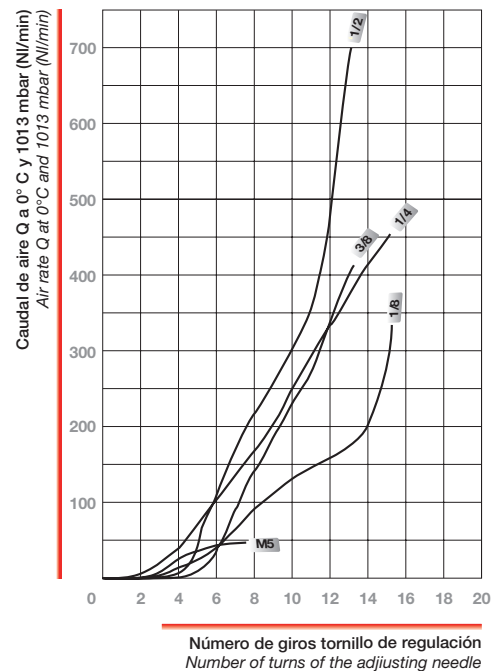
# 8850

**REGOLATORE DI FLUSSO UNIDIREZIONALE**  
 UNI-DIRECTIONAL FLOW REGULATOR



Codice Code	A	B	C	H	D	F	L	M	CH	Conf. Pack.
088500001	M5	25	15	12	18	4.5	20-27	M10x0.75	12	25
088500002	1/8	35	22	18	24.7	4.5	26-36	M12x0.75	15	25
088500003	1/4	46	30	20	35	6.5	26-36	M12x0.75	15	25
088500004	3/8	50	30	25	35	6.5	32-42	M18x1.5	22	10
088500005	1/2	60	40	25	44	6.5	32-44	M18x1.5	22	10

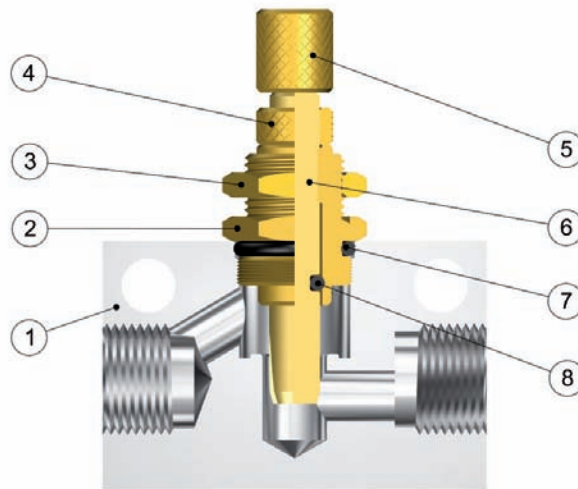
## CARATTERISTICHE DI FLUSSO REGOLATORI DI PORTATA UNIDIREZIONALI FLOW CHARACTERISTICS ADJUSTABLE RESTRICTOR VALVES UNI-DIRECTIONALS



**Pressione assoluta a monte:** **7 bar**  
 Inlet Pressure: 7 bar  
**Pressione assoluta a valle:** **Pressione Atmosferica**  
 Outlet Pressure: Atmosphere Pressure



# Regolatori di Flusso Bidirezionali / Bi-directional Flow Regulator



## Materiali e Componenti / Component Parts and Materials

- |                                 |                                  |
|---------------------------------|----------------------------------|
| 1 Corpo in alluminio anodizzato | 1 Anodized aluminium Body        |
| 2 Nipplo in ottone              | 2 Brass Nipple                   |
| 3 Ghiera di fissaggio in ottone | 3 Brass Locking nut              |
| 4 Ghiera in ottone              | 4 Brass Nut                      |
| 5 Pomolo in ottone              | 5 Brass Adjusting Knob           |
| 6 Spillo in ottone              | 6 Brass Adjusting needle         |
| 7 O-Ring Nipplo in NBR 70       | 7 NBR 70 O-Ring Nipple           |
| 8 O-Ring Spillo in NBR 70       | 8 NBR 70 O-Ring Adjusting needle |

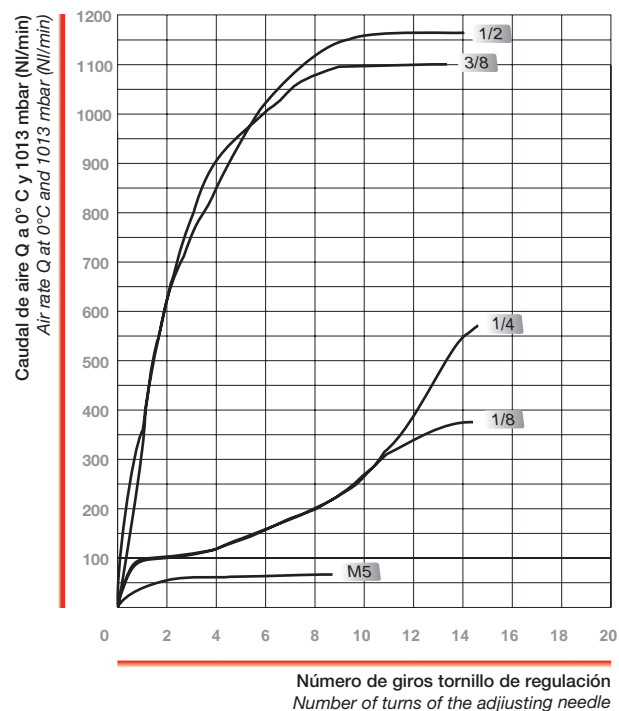
## Pressioni / Pressures

Pressione minima / Minimum pressure: **0 bar (0 MPa)**  
 Pressione massima / Maximum pressure: **10 bar (1.5 MPa)**

## Temperature / Temperatures

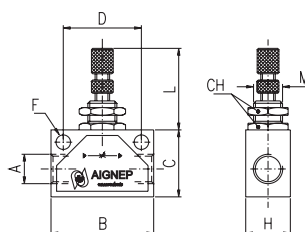
Temperatura minima / Minimum temperature: **-20 °C**  
 Temperatura massima / Maximum temperature: **+80 °C**

## CARATTERISTICHE DI FLUSSO REGOLATORI DI PORTATA BIDIREZIONALE FLOW CHARACTERISTICS ADJUSTABLE RESTRICTOR VALVES BI-DIRECTIONALS



# 8860

REGOLATORE DI FLUSSO BIDIREZIONALE  
 BI-DIRECTIONAL FLOW REGULATOR



Codice Code	A	B	C	H	D	F	L	M	CH	Conf. Pack.
0886000001	M5	25	15	12	18	4.5	20-27	M10x0.75	12	25
0886000002	1/8	35	22	18	24.7	4.5	27-34	M12x0.75	15	25
0886000003	1/4	46	30	20	35	6.5	27-34	M12x0.75	15	25
0886000004	3/8	50	30	25	35	6.5	32-43	M18x1.5	22	10
0886000005	1/2	60	40	25	44	6.5	32-43	M18x1.5	22	10

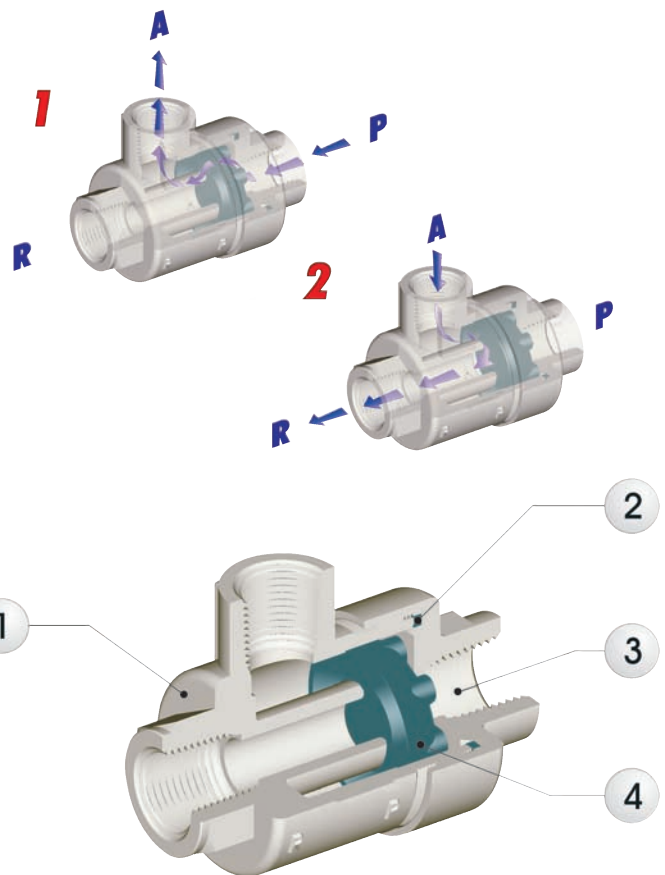
Pressione assoluta a monte:  
 Inlet Pressure: **7 bar**  
 Pressione assoluta a valle:  
 Outlet Pressure:

**7 bar**  
 Pressione Atmosferica  
 Atmosphere Pressure

## Valvole a Scarico rapido / Quick Exhaust Valve

Nella norma UNI ISO 5598 questo articolo viene così definito: "Valvola la cui uscita viene immediatamente aperta a scarico ogni qualvolta cala il valore di pressione dell'aria all'ingresso". L'aria proveniente dall'impianto entra da P sposta il tampone escludendo lo scarico R e va all'utilizzo A (Fig. 1). Nel momento in cui viene a mancare la pressione all'ingresso P, l'aria che si trova all'utilizzo per differenza di pressione sposta il tampone escludendo P e fuoriesce dallo scarico R (Fig. 2). Queste valvole permettono quindi una maggiore rapidità di scarico velocizzando i cicli di lavoro. All'uscita di R è sempre consigliabile mettere un silenziatore, oppure con opportuni collegamenti si può riutilizzare il flusso per ulteriori segnali o utilizzi.

According to the definition of the UNI standards ref. UNI-ISO 5598 this valve is considered: "Valve which immediately opens its outlet to exhaust, whenever the pressure of the air decreases at the inlet." The air arrives from the system and enters at "P", it moves the pad (Part. N. 3) sealing "R" and bending the pad edges, it travels to "A" (Fig. N.1). When it miss the pressure in "P", the air presents into the system due to the difference of pressure, it moves the pad sealing "P" and it clears through outlet "R" (Fig N.2). This allows a speedy and a better exhaust and also it speeds up the work cycles. At the outlet "R" it is advised to assembly a silencer or if necessary use the flow for further signals or uses.



### Materiali e Componenti / Component Parts and Materials

- |                                 |                                 |
|---------------------------------|---------------------------------|
| 1 Corpo in Ottone nichelato     | 1 Nickel-plated Brass Body      |
| 2 Guarnizione O-Ring in PA66    | 2 PA66 O-RING Seals             |
| 3 Coperchio in ottone nichelato | 3 Nickel-plated Brass Cover cap |
| 4 Tampone in NBR 70             | 4 NBR 70 Pad                    |

### Pressioni / Pressures

Pressione minima / Minimum pressure: **0.3 bar (0.03 MPa)**  
 Pressione massima / Maximum pressure: **10 bar (1 MPa)**

### Temperature / Temperatures

Temperatura minima / Minimum temperature: **-20 °C**  
 Temperatura massima / Maximum temperature: **+80 °C**

### Filettature / Threads

Gas cilindrica conforme ISO 228 / Parallel gas in conformity with ISO 228.

### Tubi di collegamento / Connection Tubes

Raccordi vari per impiantistica pneumatica.  
 Tubi metallici in genere.

Various types of fittings used on the pneumatic systems and metallic threaded tubes.

### Fluidi compatibili / Fluids

Aria compressa / Compressed air.

#### ATTENZIONE!

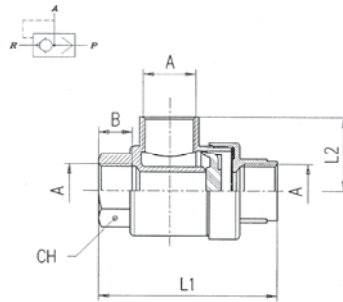
LO SCARICO IN AMBIENTE ESCLUDE L'UTILIZZO DELLA VALVOLA CON GAS TOSSICI, CORROSIVI, INFIAMMABILI.

#### ATTENTION!

THE FREE EXHAUST TO ATMOSPHERE DO NOT ALLOW TO USE THE VALVE WITH TOXICS, CORROSIVES AND INFLAMMABLES GAS.

# 6050

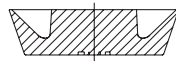
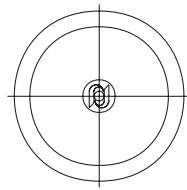
VALVOLA A SCARICO RAPIDO - QUICK EXHAUST VALVE



Codice Code	A	B	L1	L2	CH	Conf. Pack.
0605000001	M5	4	25	10	17	25
0605000002	1/8	8.5	42	19.5	15	25
0605000003	1/4	11	54	25	19	10
0605000004	3/8	12	60.5	26.5	22	10
0605000005	1/2	15	72	32	26	10
0605000006	3/4	18.5	88	37	32	5
0605000007	1"	19	109	48	46	1

# 6052

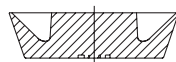
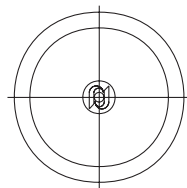
TAMPONE PER VALVOLA A SCARICO RAPIDO IN NBR - PAD FOR QUICK EXHAUST VALVE MADE IN NBR



Codice Code	Misura Size	Conf. Pack.
060520029B500	M5	25
0605200290200	1/8	25
0605200290300	1/4	25
0605200290400	3/8	10
0605200290500	1/2	10
0605200290700	3/4	5
0605200290900	1"	5

# 6052

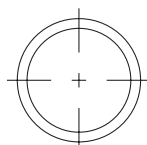
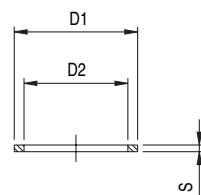
TAMPONE PER VALVOLA A SCARICO RAPIDO IN POLIURETANO - PAD FOR QUICK EXHAUST VALVE MADE IN POLYURETHANE



Codice Code	Misura Size	Conf. Pack.
0605200350200	1/8*	25
0605200350300	1/4*	25
0605200350500	1/2*	10
0605200350700	3/4*	5

# 6053

GUARNIZIONE COPERCHIO - CAP SEAL

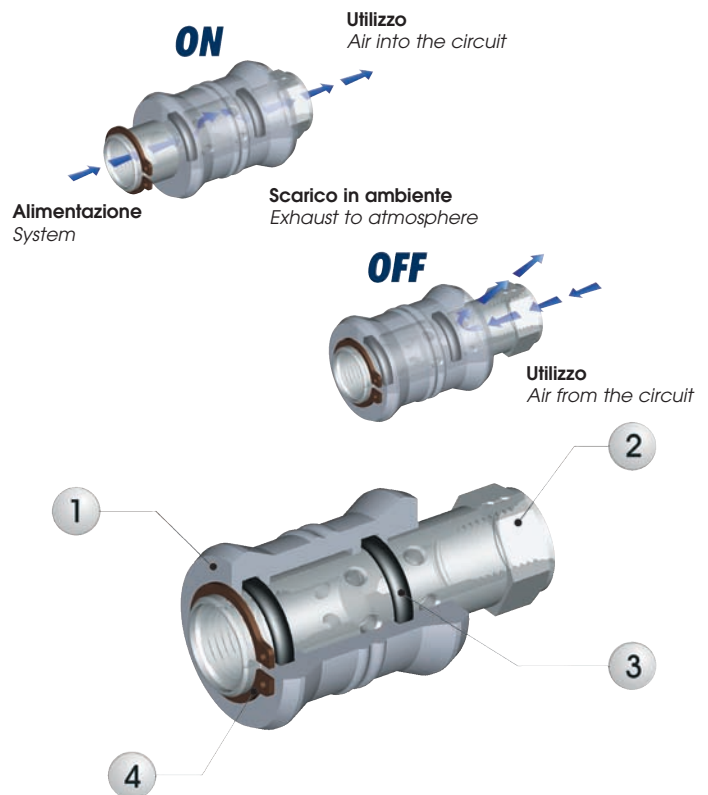


Codice Code	Misura Size	D1	D2	S	Conf. Pack.
060530025B500	M5	15.8	13	1	25
0605300250200	1/8	24	20.2	1.3	25
0605300250300	1/4	29	25.4	1.5	25
0605300250400	3/8	33.5	28	1.5	10
0605300250500	1/2	38.8	34.5	1.5	10
0605300250700	3/4	43	38	1.5	5
0605300250900	1"	68.5	60.5	3.4	5

## Valvole a Corsoio / Slide Valve

Le valvole a corsoio possono essere considerate valvole di intercettazione ON-OFF con la variante che in posizione di chiuso lasciano defluire l'aria dell'utilizzo in ambiente, scaricando quindi la pressione nell'impianto a valle. Nella posizione ON l'aria proveniente dall'impianto si convoglia verso l'utilizzo attraverso il collegamento dei fori radiali sullo stelo della valvola. Spostando il manicotto in posizione OFF si esclude il collegamento tra impianto e utilizzo e l'aria che si trova in quest'ultimo, defluisce automaticamente in ambiente per differenza di pressione.

The slide valve can be considered a reversing valves ON-OFF with the variant that in the closed position it allows the used air to flow out to atmosphere. More detailed: in the opened position the air which comes from the system directs itself towards the circuit across the connection of the radial holes on the stem of the valve. Throwing the sleeve in the closed position You leave out the connection of the radial holes and the air which is still in the circuit due to the difference of pressure with the atmosphere, flows out automatically.



## Materiali e Componenti / Component Parts and Materials

- |                                     |                                   |
|-------------------------------------|-----------------------------------|
| 1 Manicotto in Alluminio anodizzato | 1 Grey anodized Aluminium Sleeve  |
| 2 Stelo in Ottone cromato           | 2 Chrome-Nickel plated Brass Stem |
| 3 Guarnizione O-Ring in NBR 70      | 3 NBR 70 O-RING Seals             |
| 4 Seeger in acciaio                 | 4 Steel Seeger                    |

## Pressioni / Pressures

Pressione minima / Minimum pressure: **0.3 bar (0.03 MPa)**  
 Pressione massima / Maximum pressure: **10 bar (1 MPa)**

## Filettature / Threads

Gas cilindrica conforme ISO 228 / Parallel gas in conformity with ISO 228.

## Tubi di collegamento / Connection Tubes

Raccordi vari per impiantistica pneumatica.  
 Tubi metallici in genere.

Various types of fittings used on the pneumatic systems and metallic threaded tubes.

## Temperature / Temperatures

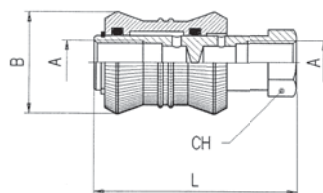
Temperatura minima / Minimum temperature: **-20 °C**  
 Temperatura massima / Maximum temperature: **+80 °C**

## Fluidi compatibili / Fluids

Aria compressa / Compressed air.

# 6060

VALVOLA A CORSOIO - SLIDE VALVE



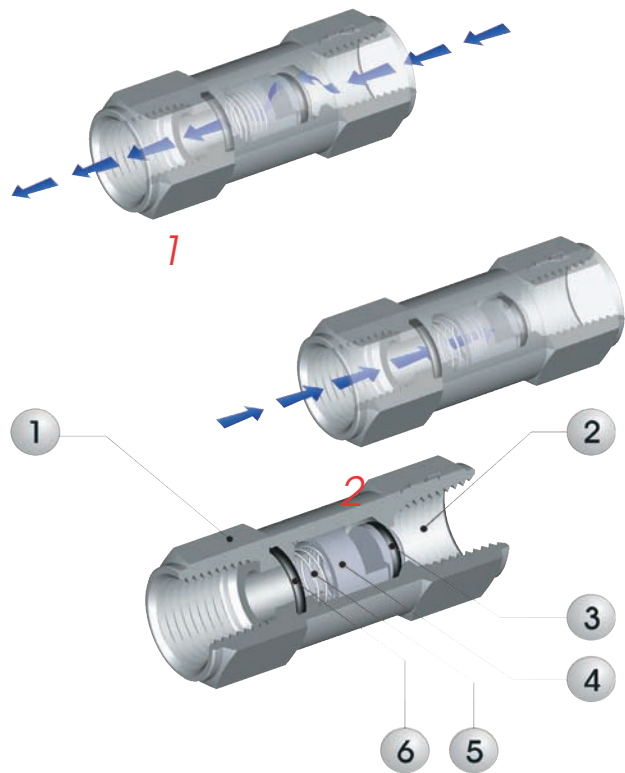
Codice Code	A	B	L	CH	Conf. Pack.
0606000001	1/8	25	48	14	10
0606000002	1/4	30	58	17	10
0606000003	3/8	35	70	22	5
0606000004	1/2	40	80	26	5



## Valvole Unidirezionali o di non ritorno / Unidirectional Valves or Non Return Valves

Questo tipo di valvole permette il libero passaggio in un solo senso (quello indicato dalla freccia) e lo impedisce nel senso contrario. Azionate direttamente dall'aria che le attraversa, vengono normalmente impiegate come dispositivi di sicurezza, consentendo di mantenere in pressione una parte del circuito pur mandando a scarico l'alimentazione.

*This kind of valves allow the free passage in only one direction, the one showed with the arrow marked on the body. They do not allow the passage on the opposite way, i.e non return. They operate directly with the air that goes through, they are normally used as safety device, permitting to keep pressure in a part of the circuit, also when the feeding pressure has been taked off.*



## Materiali e Componenti / Component Parts and Materials

- 1 Corpo in ottone nichelato
- 2 Attacco Terminale in ottone nichelato
- 3 Guarnizione O-Ring in NBR 70
- 4 Otturatore in ottone nichelato
- 5 Molla di mantenimento in acciaio AISI 302
- 6 Guarnizione O-Ring in NBR 70

- 1 Nickel-plated Brass Body
- 2 Nickel-plated Brass Valve Back Part
- 3 NBR 70 O-RING Seals
- 4 Nickel-plated Brass Shutter
- 5 Steel AISI 302 Keep spring
- 6 NBR 70 O-RING Seals

## Pressioni / Pressures

**Pressione minima / Minimum pressure: 2 bar (0,2 MPa)**  
**Pressione massima / Maximum pressure: 8 bar (0,8 MPa)**  
**Pressione indicativa apertura: 0,2 bar (0,02 MPa)**  
*Approximate opening pressure: 0,2 bar (0,02 MPa)*

## Temperature / Temperatures

**Temperatura minima / Minimum temperature: -20 °C**  
**Temperatura massima / Maximum temperature: +80 °C**

## Filettature / Threads

Gas cilindrica conforme ISO 228 / Parallel gas in conformity with ISO 228.

## Tubi di collegamento / Connection Tubes

Raccordi vari per impiantistica pneumatica.  
 Tubi metallici in genere.

*Various types of fittings used on the pneumatic systems and metallic threaded tubes.*

## Fluidi compatibili / Fluids

Aria compressa / Compressed air.

### ATTENZIONE!

LO SCARICO IN AMBIENTE ESCLUDE L'UTILIZZO DELLA VALVOLA CON GAS TOSSICI, CORROSIVI, INFIAMMABILI.

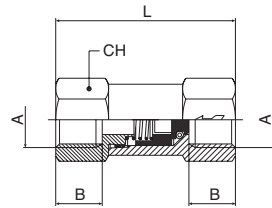
### ATTENTION!

THE FREE EXHAUST TO ATMOSPHERE DO NOT ALLOW TO USE THE VALVE WITH TOXICS, CORROSIVES AND INFLAMMABLES GAS.

# 6062

VALVOLA UNIDIREZIONALE FEMMINA-FEMMINA - FEMALE-FEMALE NON RETURN VALVE

SU RICHIESTA O-RING IN FKM  
IF REQUIRED FKM O-RING

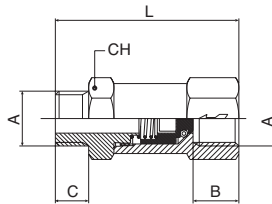


Codice Code	A	B	L	CH	Conf. Pack.
060620001	M5	5.5	26.5	8	10
060620002	1/8	8.5	35.5	13	10
060620003	1/4	11	43	17	10
060620004	3/8	12	58	24	10
060620005	1/2	15	63	24	10

# 6063

VALVOLA UNIDIREZIONALE MASCHIO-FEMMINA - MALE-FEMALE NON-RETURN VALVE

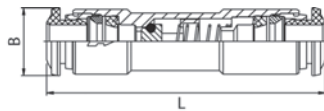
SU RICHIESTA O-RING IN FKM  
IF REQUIRED FKM O-RING



Codice Code	A	B	C	L	CH	Conf. Pack.
060630001	M5	5.5	4	34.5	8	10
060630002	1/8	8.5	6	37.5	14	10
060630003	1/4	11	8	46.5	17	10
060630004	3/8	12	9	61	24	10
060630005	1/2	15	10	64	24	10

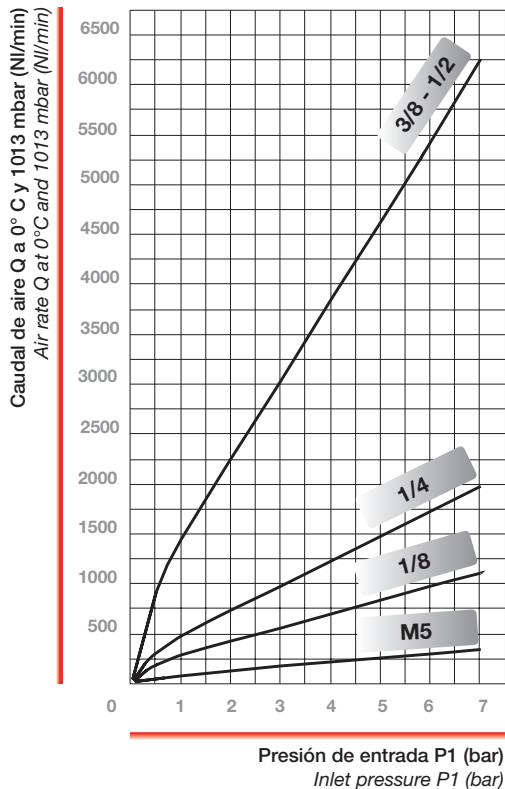
# 6064

VALVOLA UNIDIREZIONALE AUTOMATICA - PUSH-IN CONNECTIONS NON-RETURN VALVE

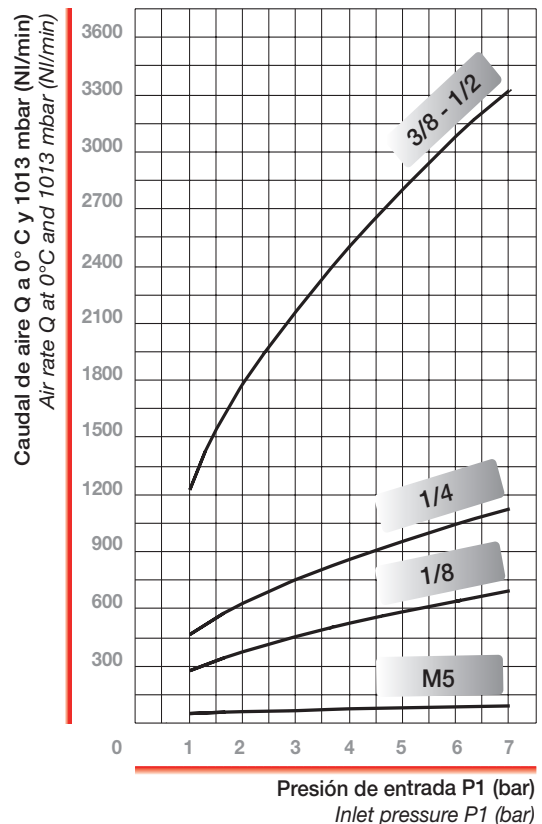


Codice Code	Tubo Tube	L	B	Conf. Pack.
060640001	4	44.5	10	10
060640002	6	52	12.5	10
060640003	8	56	14	10

Caratteristiche di flusso con scarico d'aria libero



Caratteristiche di flusso con perdite di carico di 1 bar



## Valvole di Blocco / Block Valve

Le valvole di blocco Aignep sono dispositivi a pilotaggio pneumatico per il controllo del movimento di un cilindro. Montate direttamente sugli attacchi di ingresso ed uscita del cilindro consentono di bloccare la corsa del pistone in caso di caduta di pressione del pilotaggio. Sono utilizzate come sistema di sicurezza: in caso di arresto di emergenza, rottura di un tubo o mancanza d'aria bloccano i dispositivi movimentati dai cilindri evitando danneggiamenti delle parti o rischi di lesioni per gli operatori. E' possibile utilizzarle anche per arrestare lo stelo in posizioni intermedie quando le applicazioni richiedono questa soluzione.

**Versioni:** sono disponibili nella versione unidirezionale e bidirezionale. **Portata:** le valvole sono a passaggio totale poiché non vi sono riduzioni di sezione ed il flusso non attraversa la molla.

**Compattezza e versatilità:** gli ingombri sono molto ridotti ed è possibile orientare sia la connessione filettata che il supporto dell'attacco del tubo per il pilotaggio. **Attacco filettato:** è possibile connettere un regolatore di flusso all'ingresso della valvola per la regolazione della velocità del cilindro.

*The AIGNEP's block valves are pneumatic driving devices used to control the movement of the cylinder. Assembled directly on the inlet and outlet ports of the cylinder allow to lock the piston stroke in case of pressure drop of the driving. They are used as safety devices in case of emergency stop, brake of a tube or air missing, they lock the apparatus moved by the cylinder avoiding damages to the devices or injury risks for the runners. It is also possible to use them to stop the piston into intermediate positions whenever the application requires such solutions.*

**Versions:** They are available in uni-direction and bi-directional versions

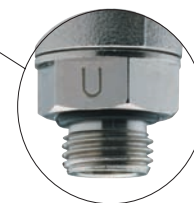
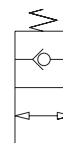
**Flow rate:** These valves are full bore, there do not have reduction of section and the flow does not pass through the spring.

**Compactness and Versatility:** The overall dimensions are extremely reduced and it is possible to orient both the threaded connection as well as the hose connection for the driving.

**Threaded connection:** It is possible to connect the flow regulator at the inlet of the valve in order to adjust the speed of the cylinder.



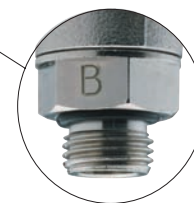
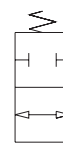
**Unidirezionale**  
*Unidirectional*



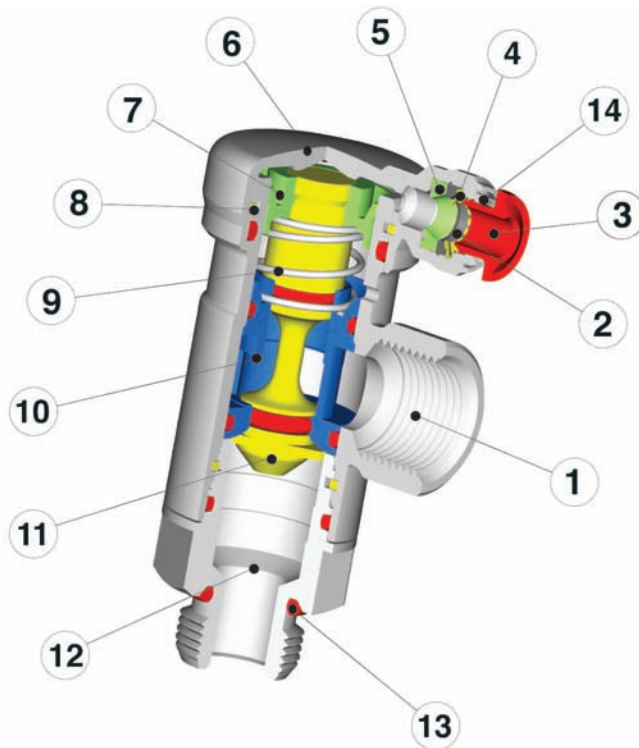
Codice: 8880  
Code: 8880



**Bi-direzionale**  
*Bi-directional*



Codice: 8890  
Code: 8890



### Materiali e Componenti / Component Parts and Materials

1 Corpo in Ottone Nichelato	1 Nickel plated brass Body
2 Anello di sicurezza in tecnopolimero	2 Tecnopolymeric Safety ring
3 Spintore sgancio tubo in Resina Acetalica	3 Acetalic Resin Collect
4 Pinza d'aggraffaggio in acciaio INOX AISI 301	4 Steel Clamping Washer INOX AISI 301
5 Guarnizione a labbro in NBR 70	5 NBR 70 Lip seal
6 Coperchio orientabile in Ottone Nichelato	6 Nickel plated brass Orienting Cover Cap
7 Guarnizione a labbro in Poliuretano	7 Polyuretane Lip seal
8 Seeger in Bronzo	8 Bronze Seeger
9 Molla in acciaio INOX AISI 302	9 Steel Spring
10 Supporto otturatore in Ottone	10 Brass Shutter Support
11 Otturatore in Ottone	11 Brass Shutter
12 Basetta orientabile in Ottone Nichelato	12 Nickel plated brass Orienting Base
13 Guarnizioni in NBR 70	13 NBR 70 O-RING
14 Capsula in ottone nichelato	14 Nickel plated brass Capsule

### Caratteristiche Tecniche / Technical Characteristics

Misura / Size

Pressione d'esercizio / Working pressure

Temperatura d'esercizio / Working temperature

Portata nominale (6 bar) / Flow rate (6 bar)

Diametro nominale / Orifice

Fluido / Fluids

**1/8**

**1/4**

**Min. 0.3 – Max. 10 bar**

**Min. -20°C Max. +80°C**

750 NI/min

1420 NI/min

Ø5.5

Ø8

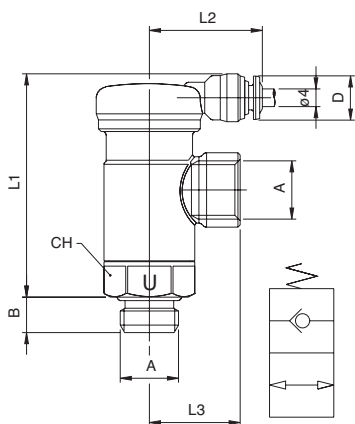
**Aria filtrata lubrificata o**

**non lubrificata**

*Filtered and lubricated compressed air as well as non lubricated air*

# 8880

VALVOLA DI BLOCCO UNIDIREZIONALE - UNIDIRECTIONAL BLOCK VALVE

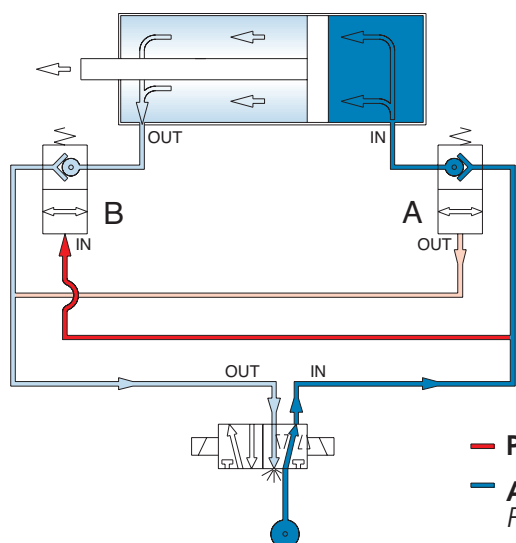


Codice Code	A	B	L1	L2	L3	CH	D	Conf. Pack.
088800002	1/8	6	50	25	18.5	18	10	5
088800003	1/4	8	50.5	25	20.5	18	10	5

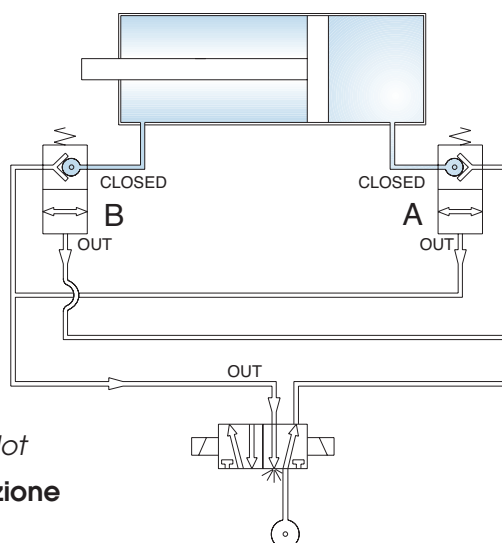


## Valvola di Blocco Unidirezionale 8880 / Unidirectional Block Valve 8880

**Cilindro in Movimento**  
Cylinder in action



**Circuito Pneumatico**  
Pneumatic Circuit



**Cilindro Bloccato**  
Stopped Cylinder

— Pilota - Pilot  
— Alimentazione Feeding

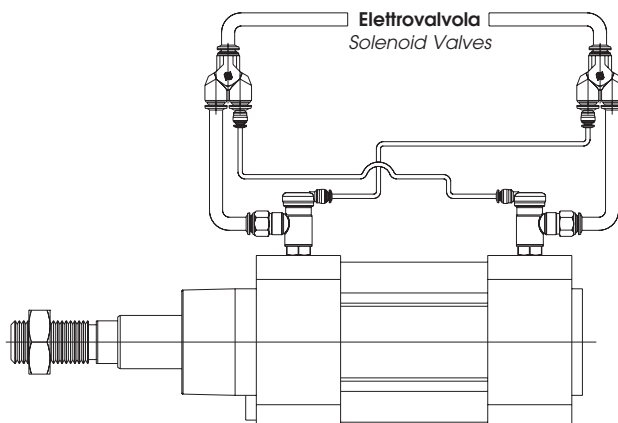
Alimentando la valvola di blocco A ed il pilota B si consente il moto del pistone in una direzione; alimentando la valvola di blocco B ed il pilota A si consente il moto del pistone nella direzione opposta.

Togliendo l'alimentazione all'intero circuito (per es. in caso di emergenza) le valvole di blocco arrestano il cilindro nella posizione in cui si trova, anche in caso che allo stelo siano applicati dei carichi.

Feeding the block valve A and the pilot B you allow the movement of the piston in one direction; feeding the block valve B and the pilot A you allow the movement of the piston in the opposite direction.

Taking away the feeding within the circuit (for example in case of emergency) the block valves lock the cylinder into the position where it is at that moment, even if at the piston are attached some loads.

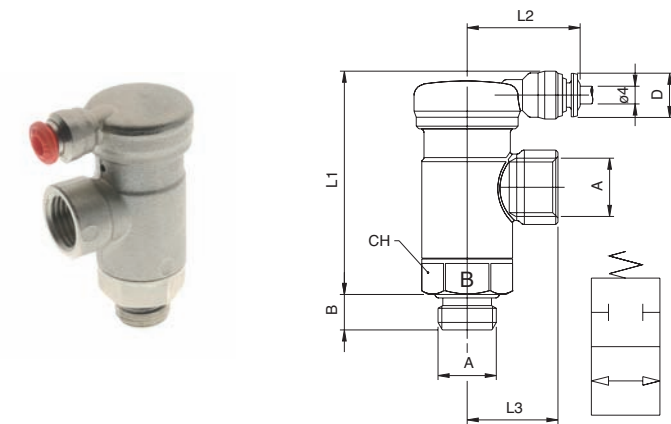
## Installazione / Installation



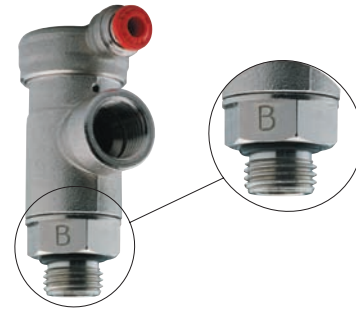


# 8890

VALVOLA DI BLOCCO BIDIREZIONALE - BIDIRECTIONAL BLOCK VALVE



Codice Code	A	B	L1	L2	L3	CH	D	Conf. Pack.
0889000002	1/8	6	50	25	18.5	18	10	5
0889000003	1/4	8	50.5	25	20.5	18	10	5

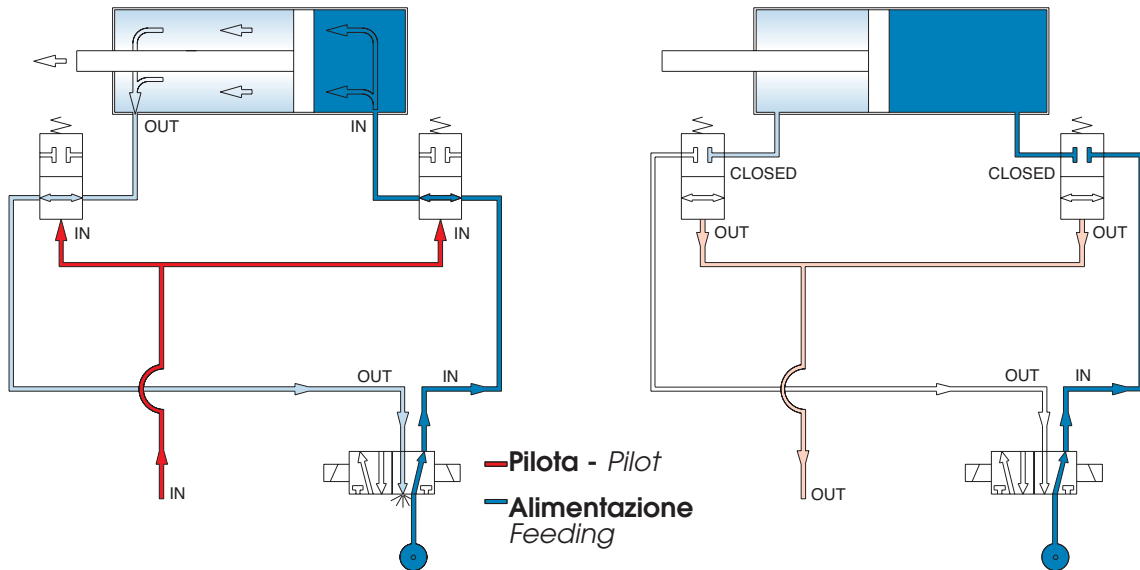


## Valvola di Blocco Bidirezionale 8890 / Bidirectional Block Valve 8890

**Cilindro in Movimento**  
Cylinder in action

**Circuito Pneumatico**  
Pneumatic Circuit

**Cilindro Bloccato**  
Stopped Cylinder



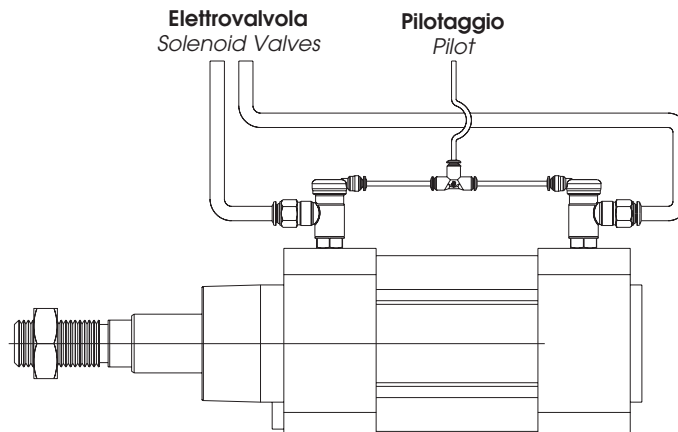
Il circuito di pilotaggio ed il circuito di alimentazione del cilindro sono indipendenti. Alimentando il circuito di pilotaggio le valvole di blocco permettono il movimento alternato del cilindro.

Togliendo l'alimentazione al circuito di pilotaggio le valvole di blocco arrestano il cilindro nella posizione in cui si trova, anche in caso che allo stelo siano applicati dei carichi.

The driving circuit and the feeding circuit of the cylinder are independent. Feeding the driving circuit the block valves allow the alternate movement of the cylinder.

Taking away the feeding to the driving circuit the block valves lock the cylinder into the position where it is at that moment, even if at the piston are attached some loads.

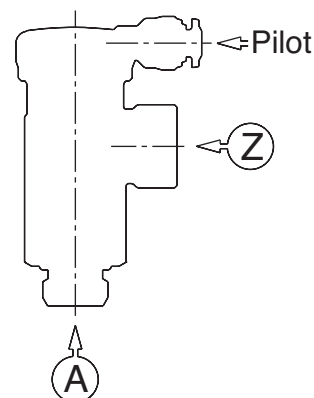
## Installazione / Installation



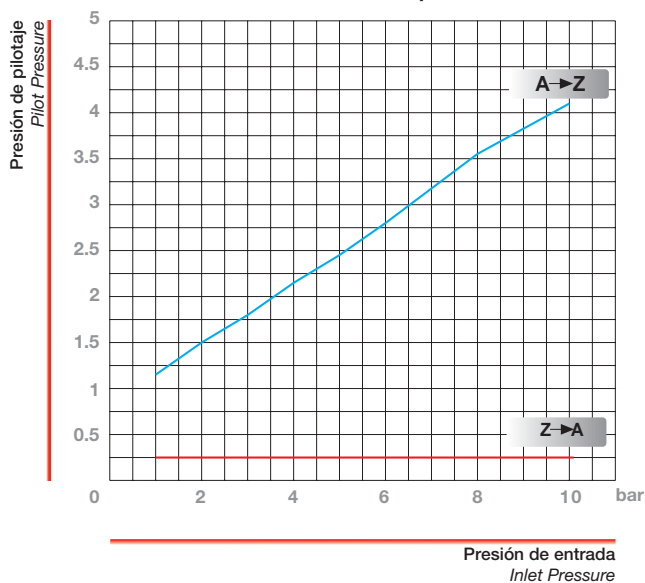
## Pressione di Pilotaggio / Pilot Pressure

**Pressione minima del Pilota per azionare la valvola, in relazione alla pressione a monte.**

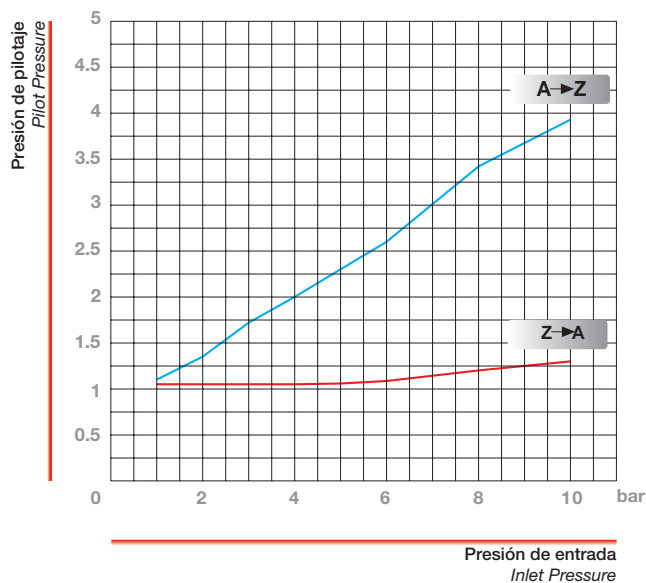
*Pilot minimum pressure to feed the valve compared to the inlet pressure.*



Unidirezionale / Unidirectional 8880

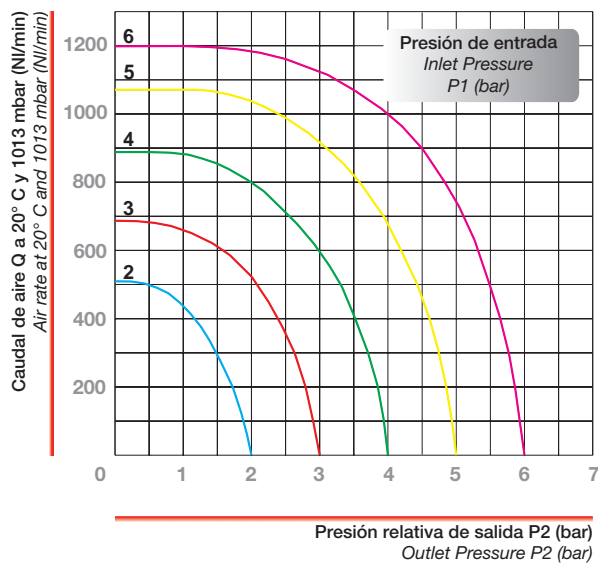


Bidirezionale / Bidirectional 8890



## Curve caratteristiche di flusso / Characteristic curves of flow

Misura / Size 1/8



Misura / Size 1/4

